

THE CAPTAIN'S HOUSE - LOT 55

<https://craneisland.com>

- 5 beds
- 5.5 baths
- 3800 sq ft

A one of a kind home commissioned by the Crane Island Development team to demonstrate the quality, attention to detail and living embodiment of the architectural character of the Island. The Captain's House is designed by the highly acclaimed team at Beau Clowney Architects www.beauclowney.com. This home and its location...



BASIC FACTS

Property ID: 8781

Post Updated: 2018-11-18 15:09:15

AC Sq Feet: 3800

Floors: 2

Plan Width: 65

Area: 3800 sq ft

Bedrooms: 5

Bathrooms: 5.5

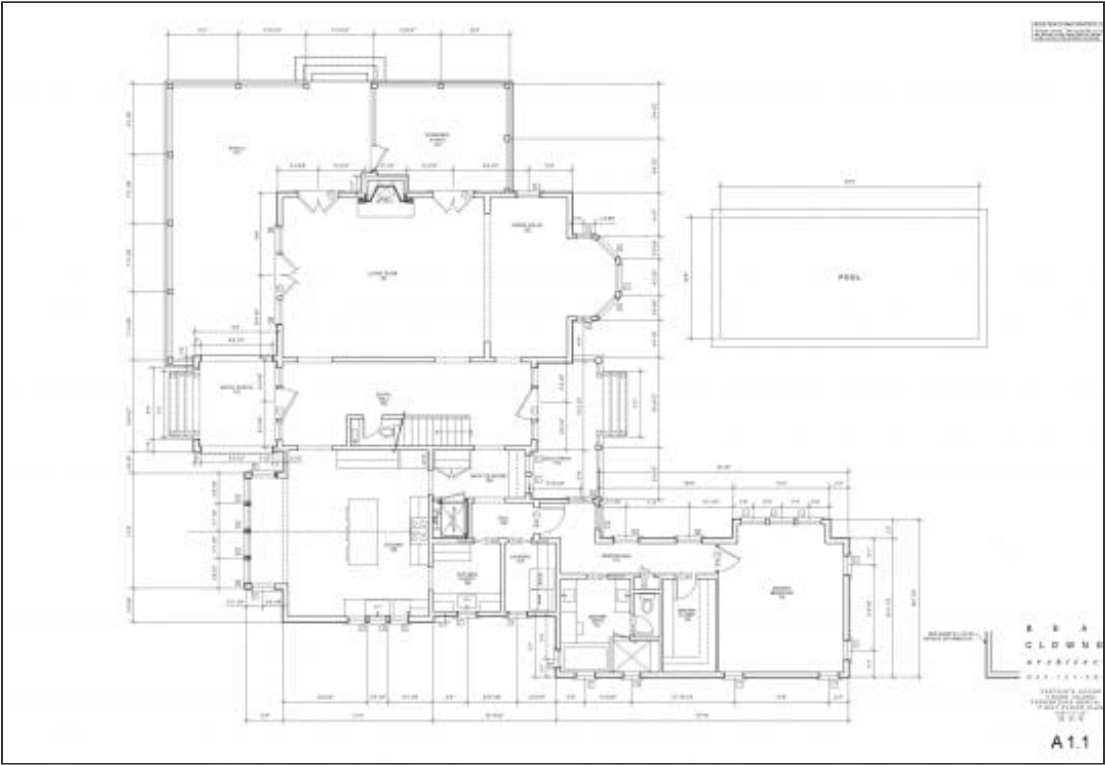
District - View: Intracoastal Waterway

Master Down: Yes

Plan Length: 80

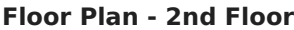
Plan Type : Architect

FLOOR PLANS



Floor Plan - 1st Floor







Floor Plan - Garage

