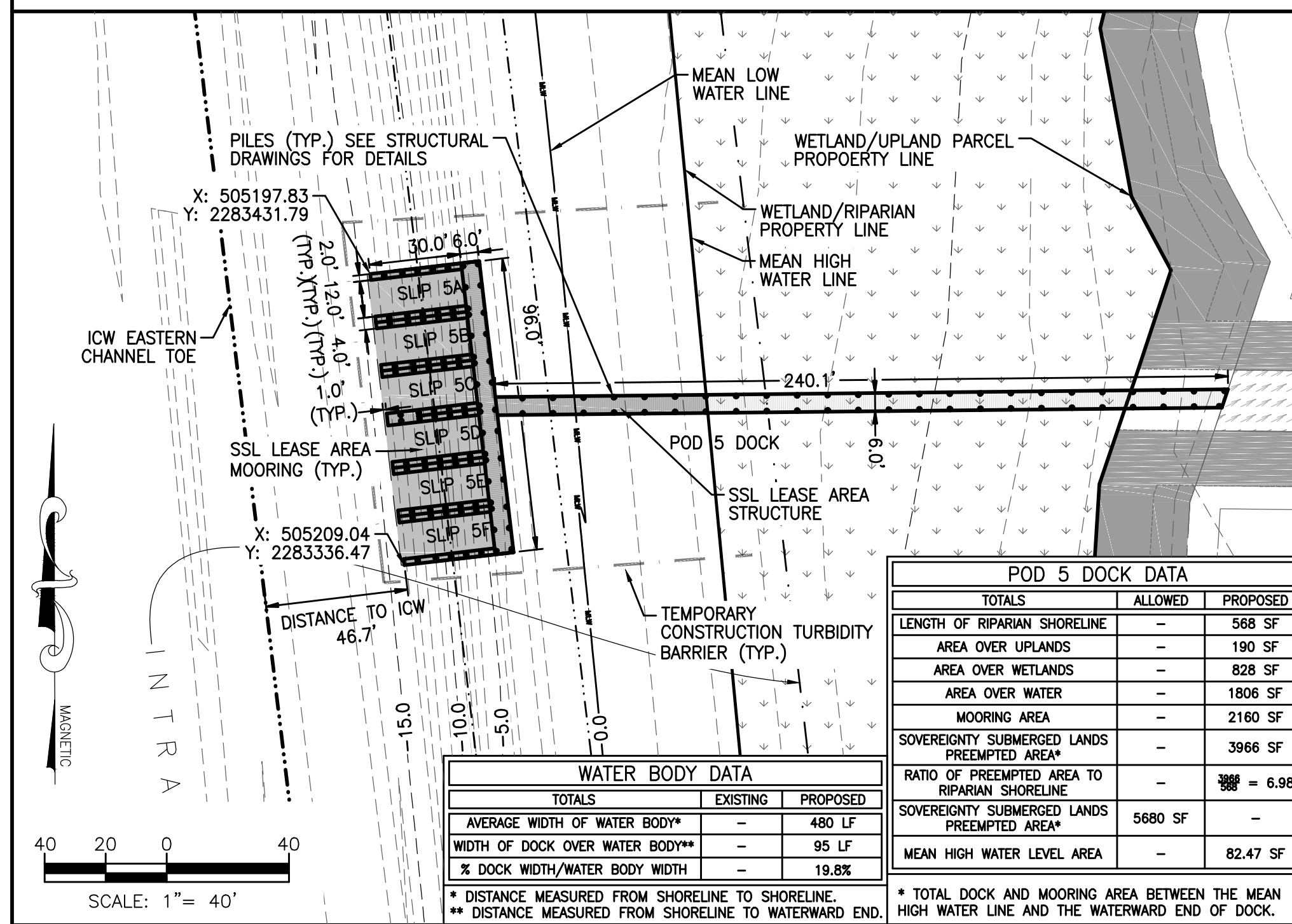
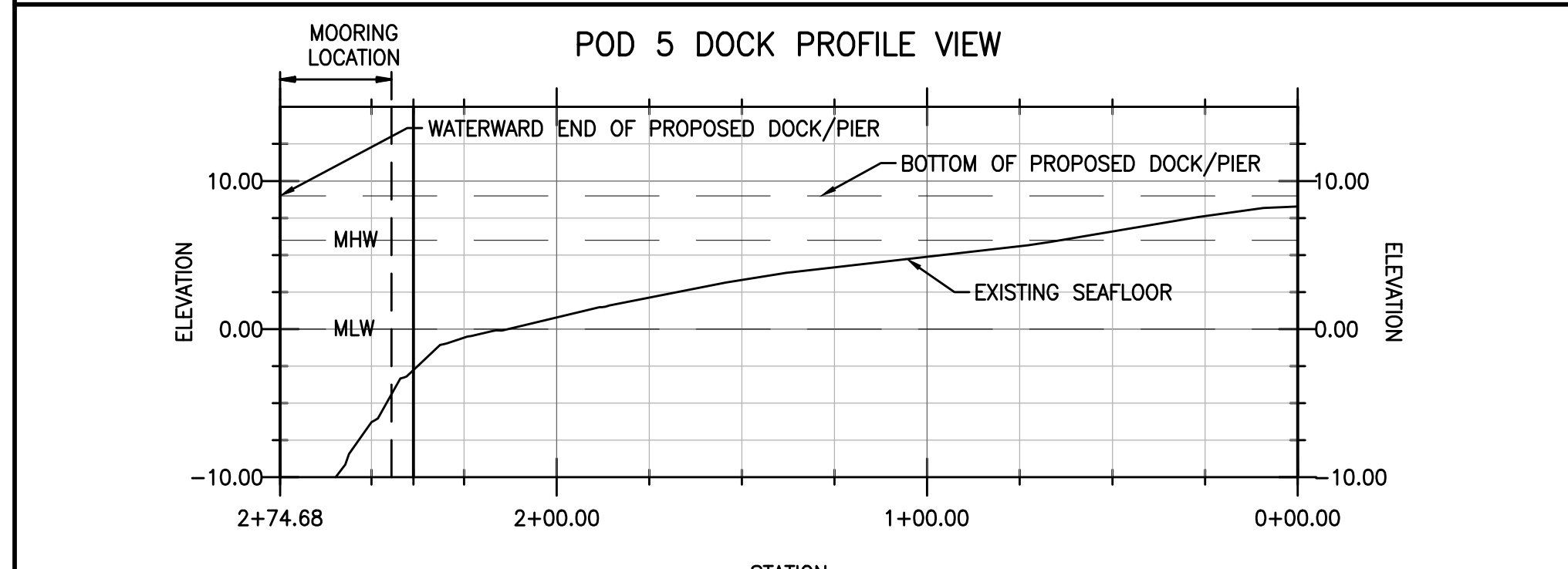


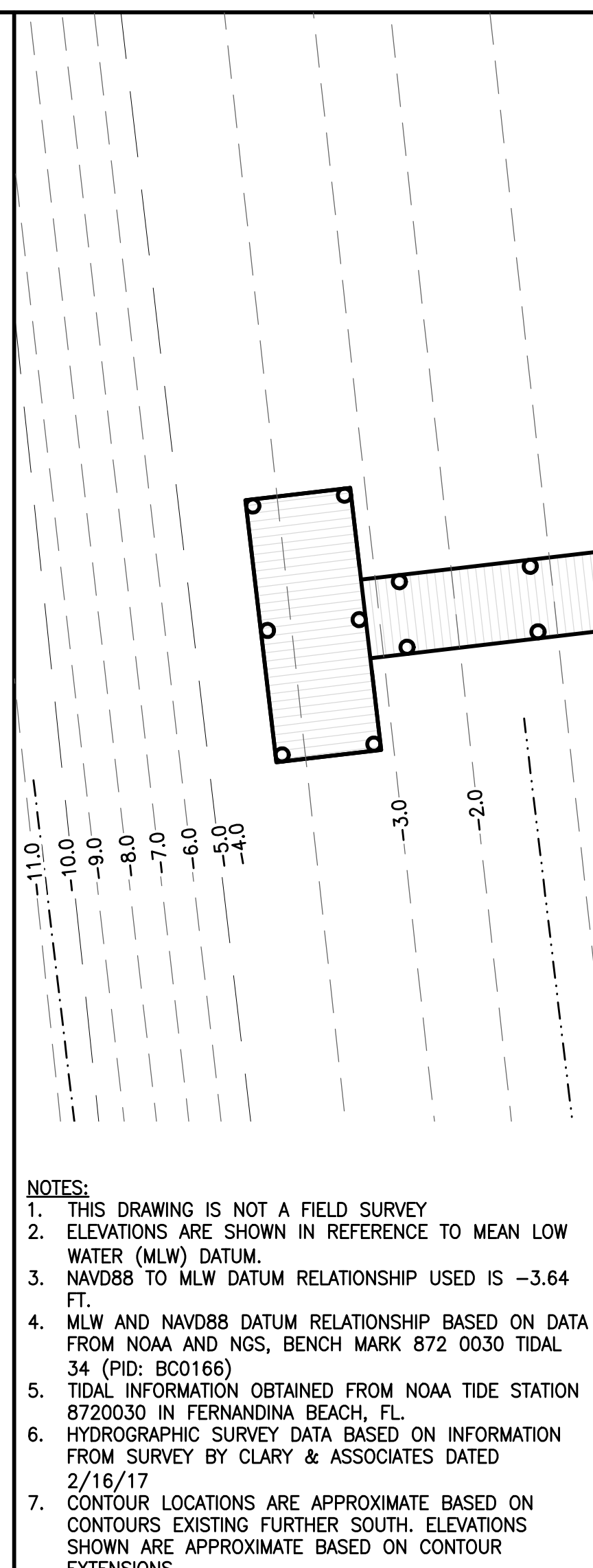
PARK PIER & POD 4 DOCK



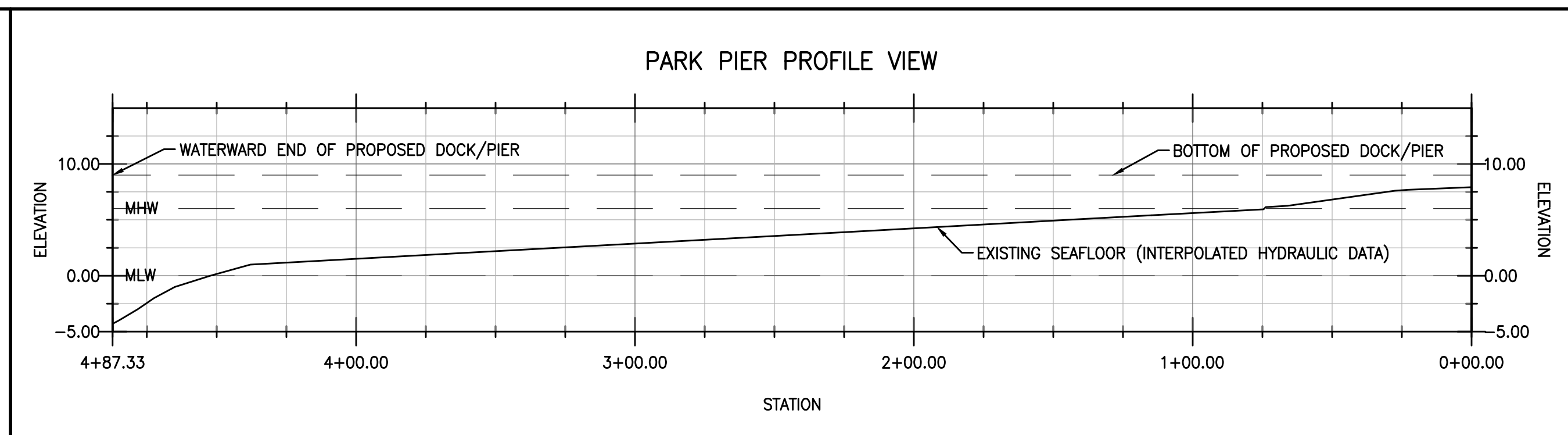
POD 5 DOCK



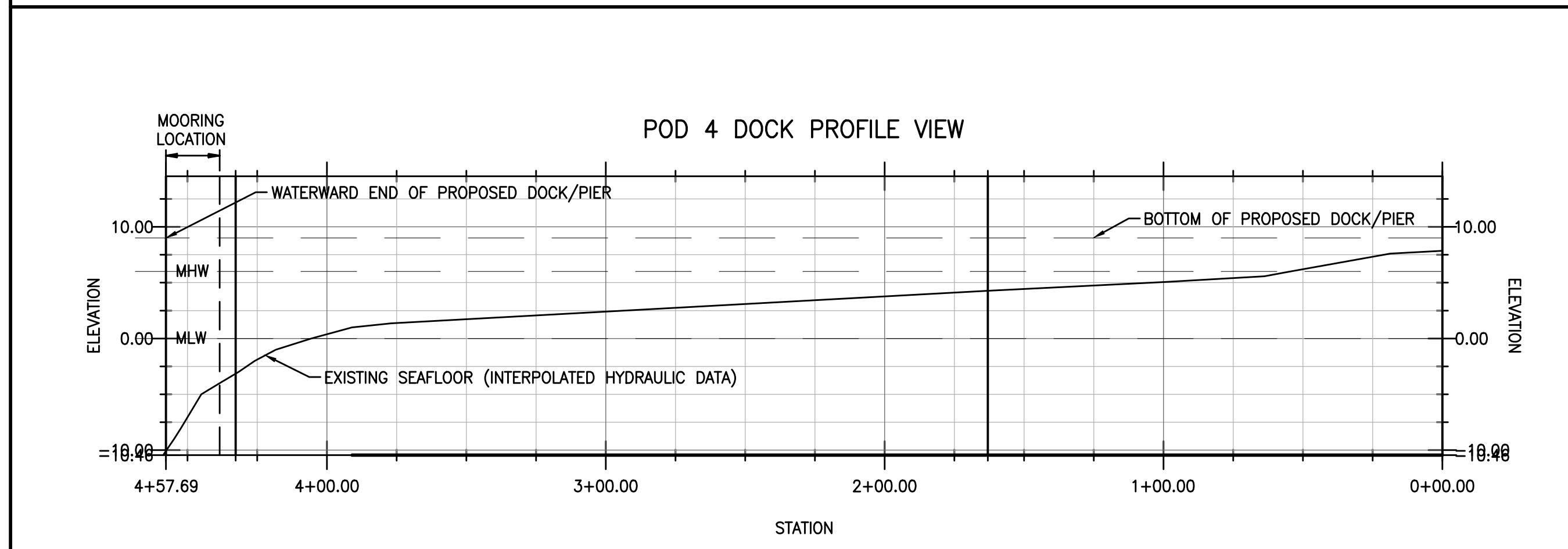
POD 5 DOCK PROFILE



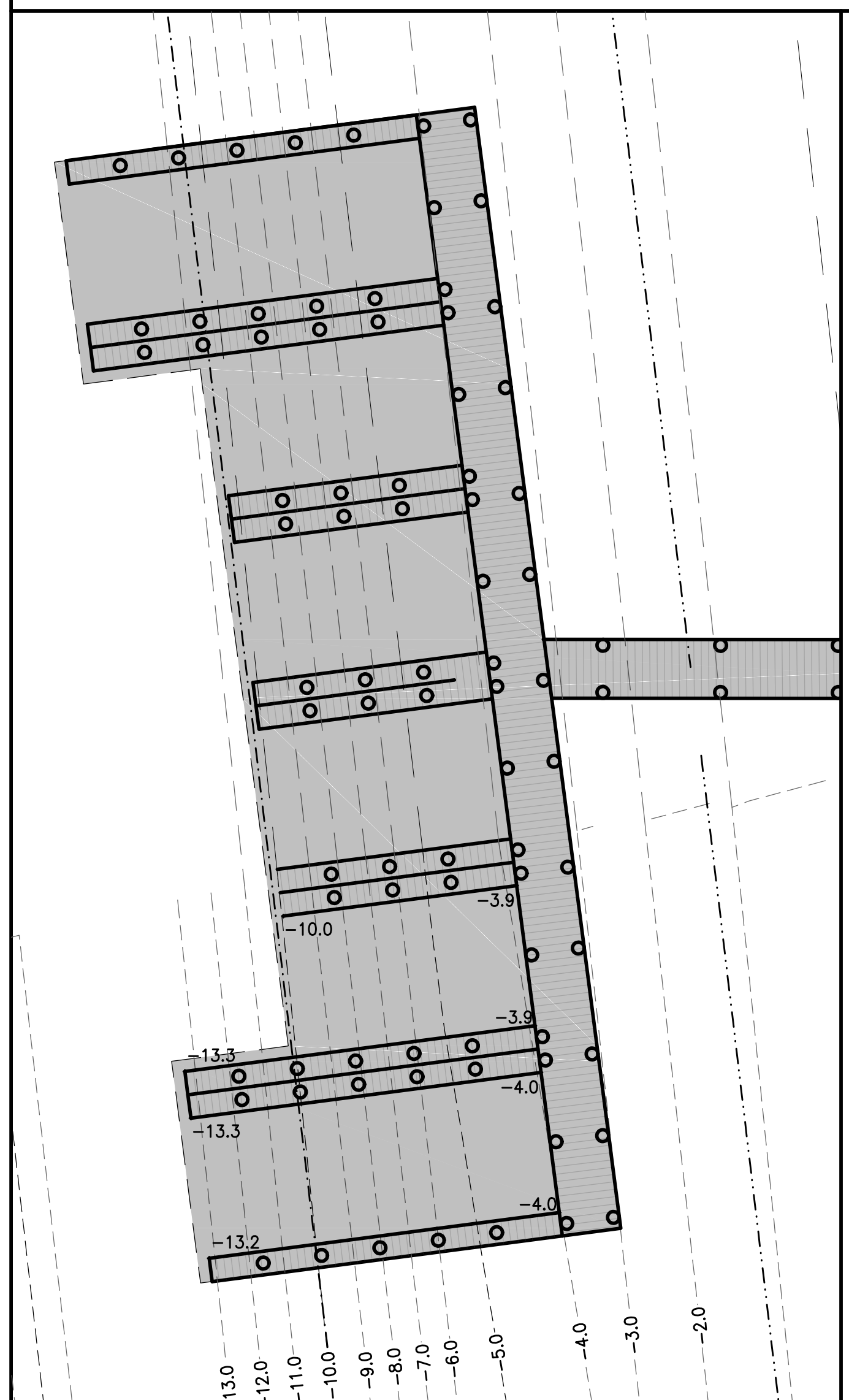
PARK PIER CLOSE-UP



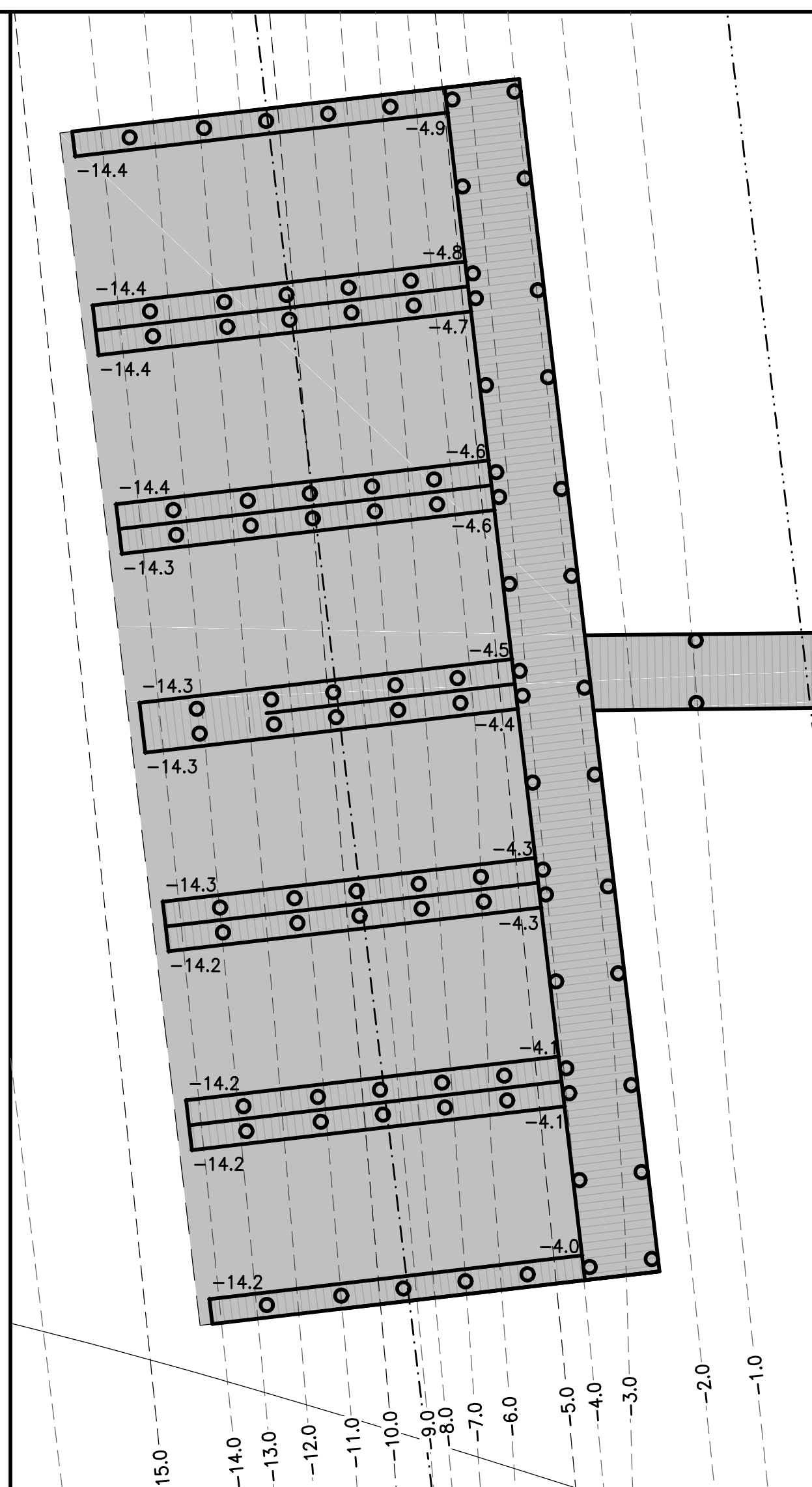
PARK PIER PROFILE



POD 4 DOCK PROFILE



POD 4 DOCK CLOSE-UP



POD 5 DOCK CLOSE-UP



RS&H, Inc.
 10748 Deerwood Park Blvd. South
 Jacksonville, Florida 32256-0597
 904-256-2500 Fax 904-256-2503
 www.rsandh.com
 FL Cert. Nos. AAC001886 * IB26000956 * 5620 * LCC000210 * GB238

THE RANGE AT CRANE ISLAND, LLC
 4001 CENTURION WAY
 FERNANDINA BEACH, FL 32034

CRANE ISLAND SUBDIVISION
 FERNANDINA BEACH, FL 32034

CONSULTANTS

REVISIONS

NO.	DESCRIPTION	DATE

DATE ISSUED: 06/22/2018
 REVIEWED BY: MAC
 DRAWN BY: CBS
 DESIGNED BY: CBS

AEP PROJECT NUMBER
 501-0223-000

© 2017, RS&H, INC.
 SHEET TITLE

CRANE ISLAND DOCKS PROPOSED PLAN DETAILS

SHEET NUMBER
C-102

PERMIT SET

REVISIONS

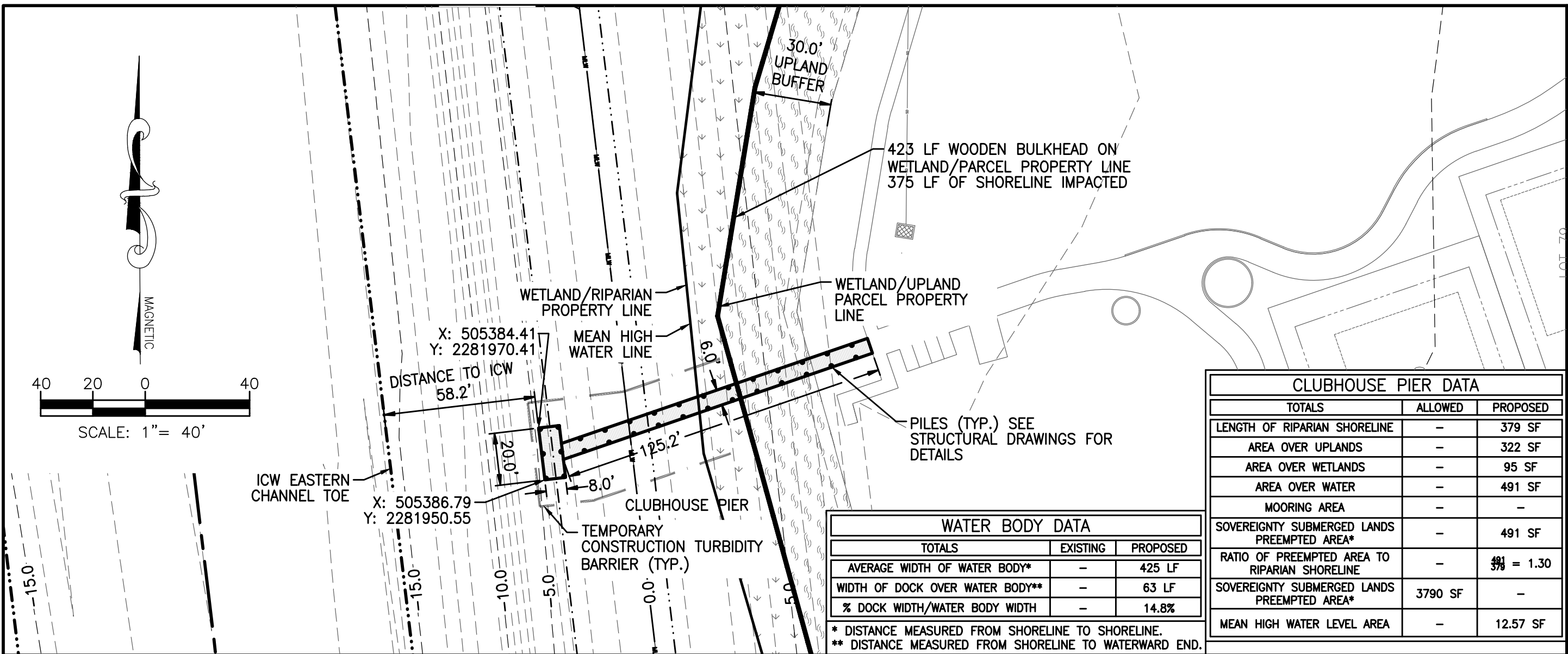
NO.	DESCRIPTION	DATE

DATE ISSUED: 06/22/2018
 REVIEWED BY: MAC
 DRAWN BY: CBS
 DESIGNED BY: CBS
 AEP PROJECT NUMBER
 501-0223-000
 © 2017, RS&H, INC.
 SHEET TITLE

**CRANE ISLAND DOCKS
 PROPOSED PLAN
 DETAILS**

SHEET NUMBER
C-104

PERMIT SET



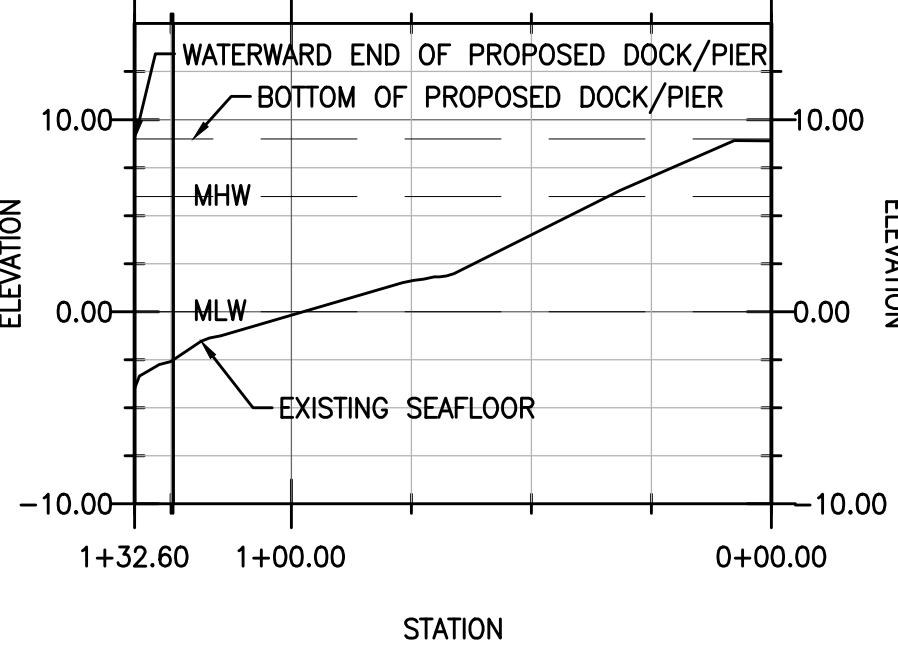
CLUBHOUSE PIER DATA		
TOTALS	ALLOWED	PROPOSED
LENGTH OF RIPARIAN SHORELINE	-	379 SF
AREA OVER UPLANDS	-	322 SF
AREA OVER WETLANDS	-	95 SF
AREA OVER WATER	-	491 SF
MOORING AREA	-	-
SOVEREIGNTY SUBMERGED LANDS PREEMPTED AREA*	-	491 SF
RATIO OF PREEMPTED AREA TO RIPARIAN SHORELINE	-	1.30
SOVEREIGNTY SUBMERGED LANDS PREEMPTED AREA*	3790 SF	-
MEAN HIGH WATER LEVEL AREA	-	12.57 SF

WATER BODY DATA		
TOTALS	EXISTING	PROPOSED
AVERAGE WIDTH OF WATER BODY**	-	425 LF
WIDTH OF DOCK OVER WATER BODY**	-	63 LF
% DOCK WIDTH/WATER BODY WIDTH	-	14.8%

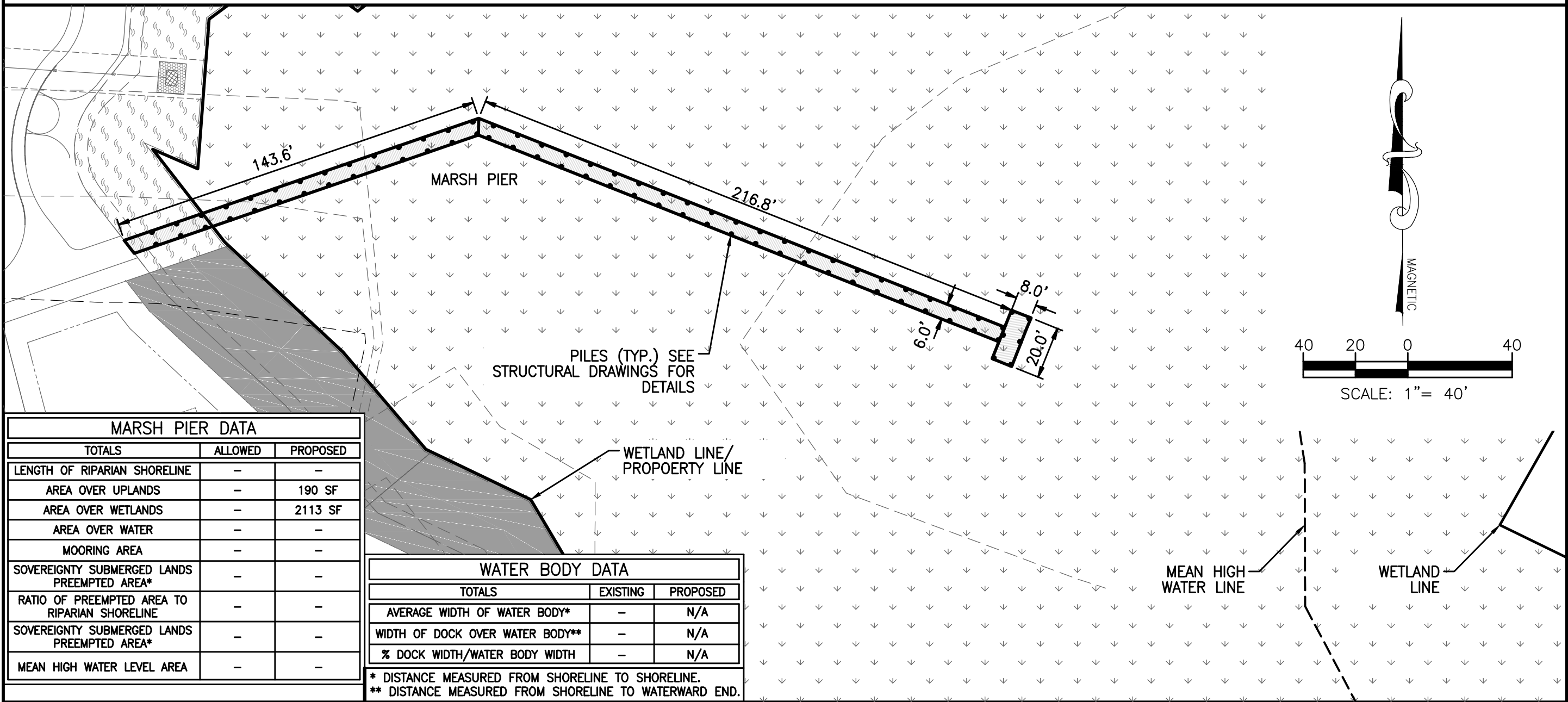
* DISTANCE MEASURED FROM SHORELINE TO SHORELINE.
 ** DISTANCE MEASURED FROM SHORELINE TO WATERWARD END.

CLUBHOUSE PIER

CLUBHOUSE PIER PROFILE VIEW



CLUBHOUSE PIER PROFILE



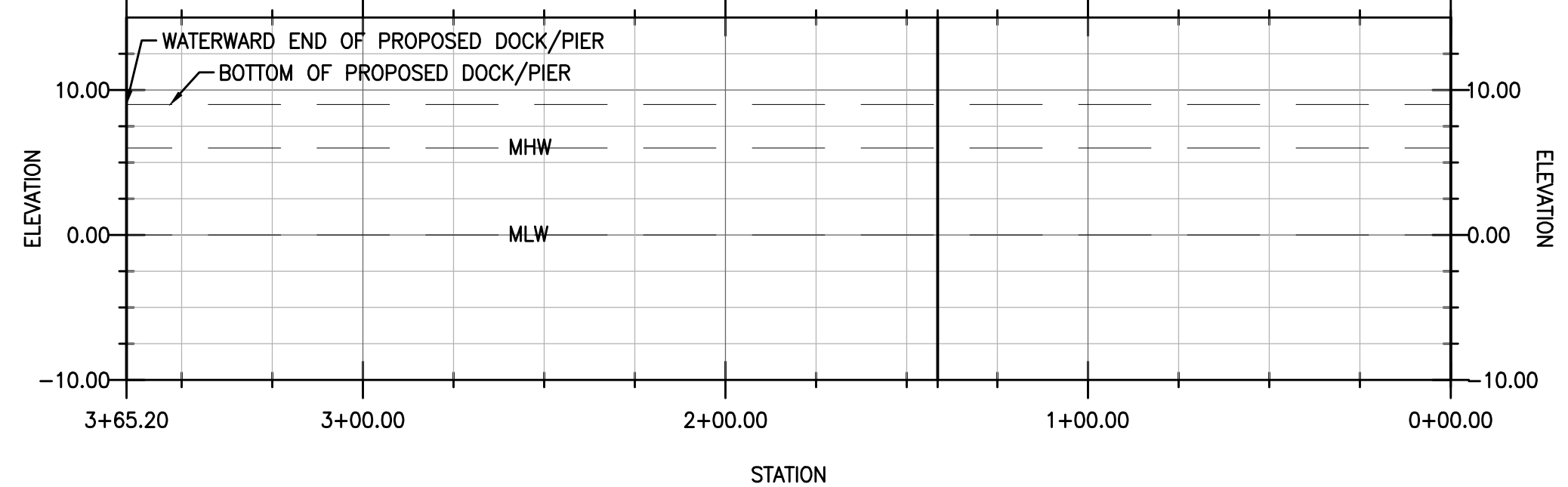
MARSH PIER DATA		
TOTALS	ALLOWED	PROPOSED
LENGTH OF RIPARIAN SHORELINE	-	-
AREA OVER UPLANDS	-	190 SF
AREA OVER WETLANDS	-	2113 SF
AREA OVER WATER	-	-
MOORING AREA	-	-
SOVEREIGNTY SUBMERGED LANDS PREEMPTED AREA*	-	-
RATIO OF PREEMPTED AREA TO RIPARIAN SHORELINE	-	-
SOVEREIGNTY SUBMERGED LANDS PREEMPTED AREA*	-	-
MEAN HIGH WATER LEVEL AREA	-	-

WATER BODY DATA		
TOTALS	EXISTING	PROPOSED
AVERAGE WIDTH OF WATER BODY**	-	N/A
WIDTH OF DOCK OVER WATER BODY**	-	N/A
% DOCK WIDTH/WATER BODY WIDTH	-	N/A

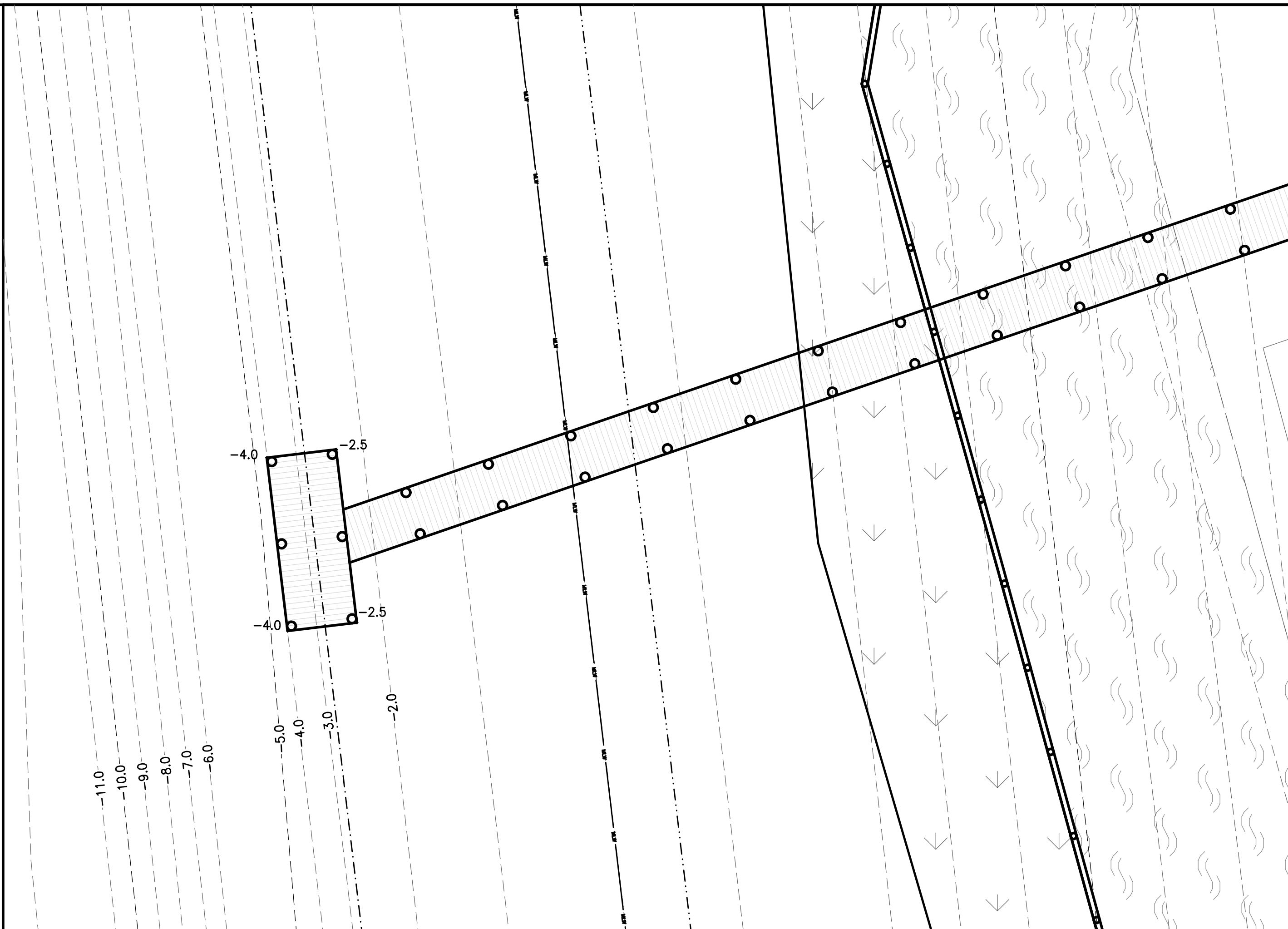
* DISTANCE MEASURED FROM SHORELINE TO SHORELINE.
 ** DISTANCE MEASURED FROM SHORELINE TO WATERWARD END.

MARSH PIER

MARSH PIER PROFILE VIEW

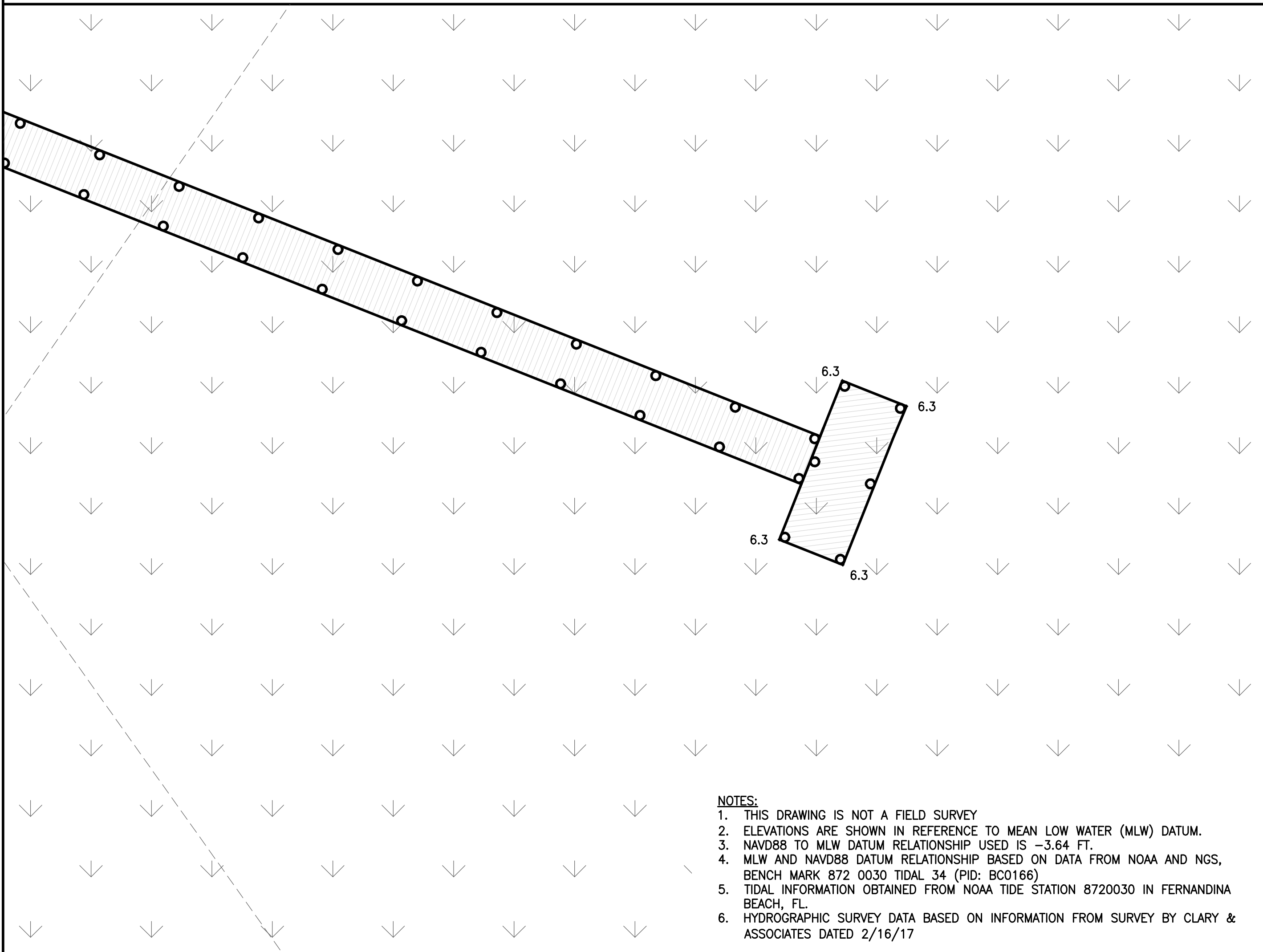


MARSH PIER PROFILE



CLUBHOUSE PIER CLOSE-UP

SCALE 1"=10'



MARSH PIER CLOSE-UP

SCALE 1"=10'

- NOTES:
- THIS DRAWING IS NOT A FIELD SURVEY
 - ELEVATIONS ARE SHOWN IN REFERENCE TO MEAN LOW WATER (MLW) DATUM.
 - NAVD88 TO MLW DATUM RELATIONSHIP USED IS -3.64 FT.
 - MLW AND NAVD88 DATUM RELATIONSHIP BASED ON DATA FROM NOAA AND NGS, BENCH MARK 872 0030 TIDAL 34 (PID: BC0166)
 - TIDAL INFORMATION OBTAINED FROM NOAA TIDE STATION 8720030 IN FERNANDINA BEACH, FL.
 - HYDROGRAPHIC SURVEY DATA BASED ON INFORMATION FROM SURVEY BY CLARY & ASSOCIATES DATED 2/16/17

RS&H, Inc.

10748 Deerwood Park Blvd. South
 Jacksonville, Florida 32256-0597
 904-256-2500 Fax 904-256-2503
 www.rsandh.com
 FL Cert. Nos. AAC001886 * 1B26000956 * 5620 * LCC000210 * GB238

**THE RANGE
 AT
 CRANE ISLAND, LLC
 4001 CENTURION WAY
 FERNANDINA BEACH, FL
 32034**

**CRANE ISLAND
 SUBDIVISION
 FERNANDINA BEACH, FL
 32034**

CONSULTANTS

REVISIONS

NO.	DESCRIPTION	DATE

DATE ISSUED: 06/22/2018

REVIEWED BY: MAC

DRAWN BY: CBS

DESIGNED BY: CBS

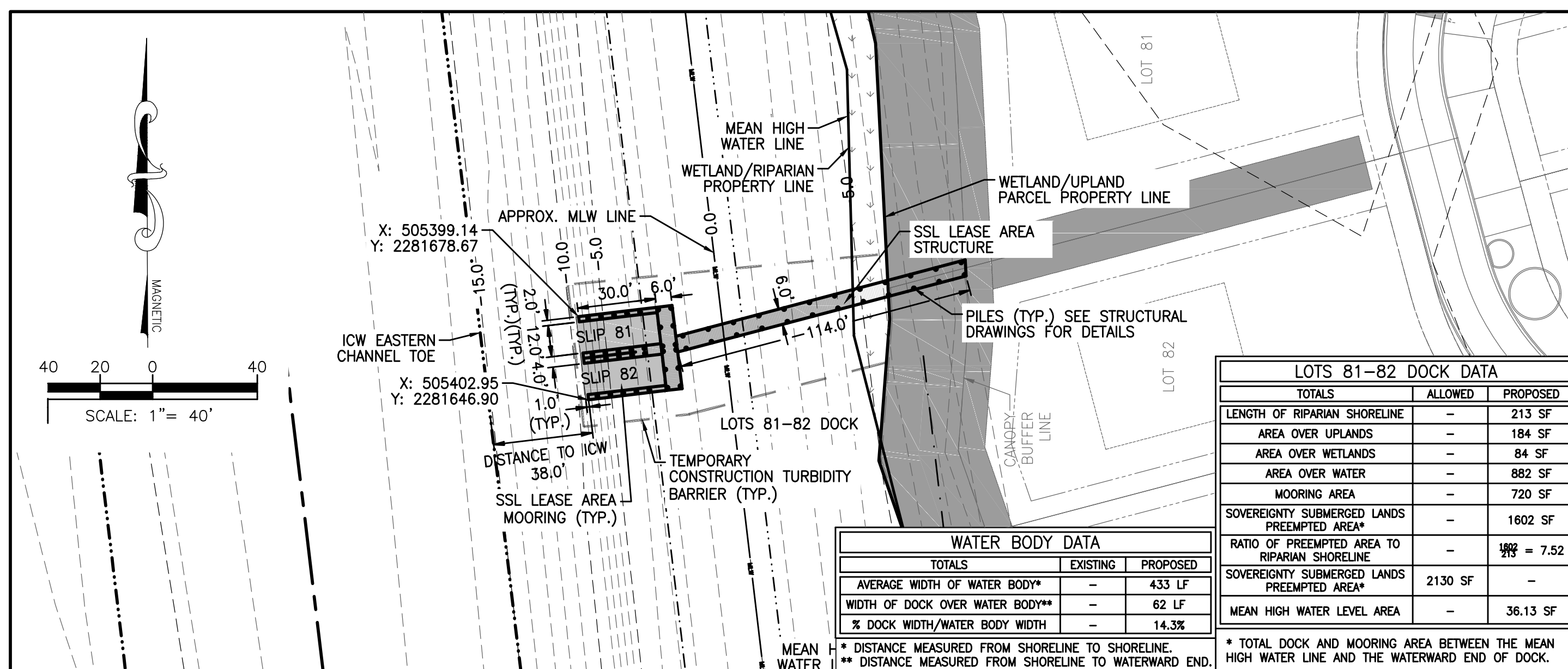
AEP PROJECT NUMBER
 501-0223-000

© 2017, RS&H, INC.
 SHEET TITLE

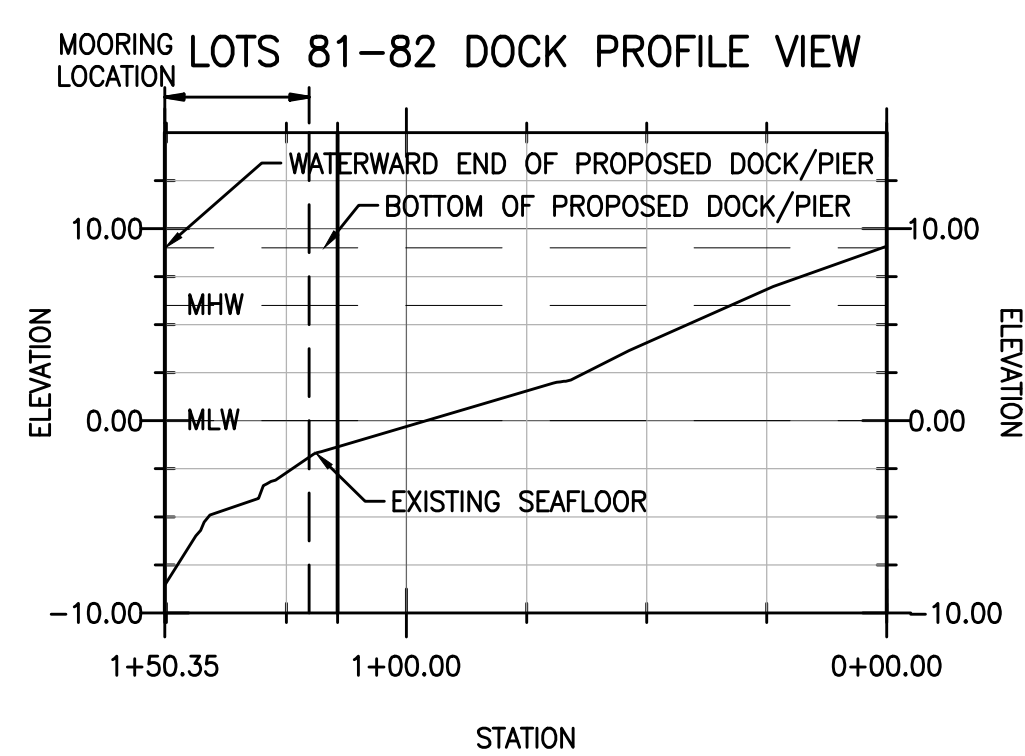
**CRANE ISLAND DOCKS
 PROPOSED PLAN
 DETAILS**

SHEET NUMBER
C-106

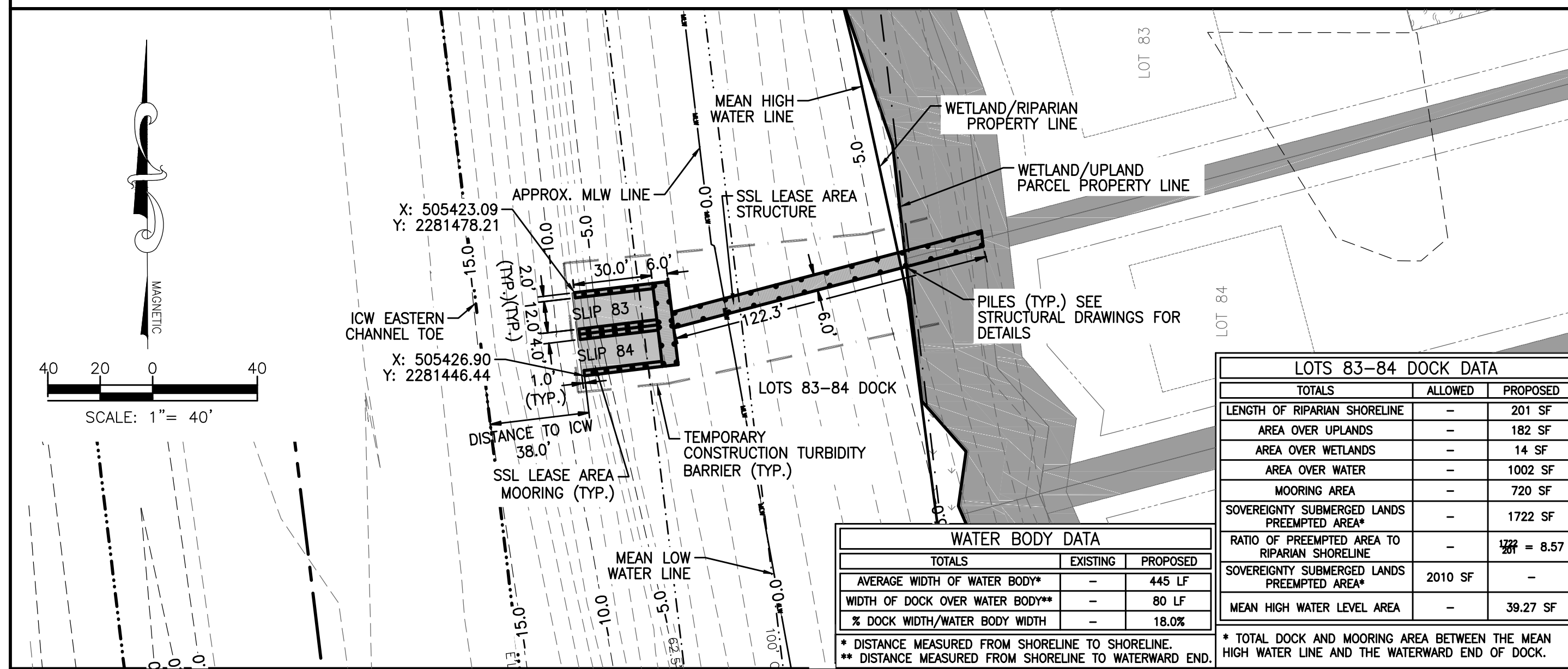
PERMIT SET



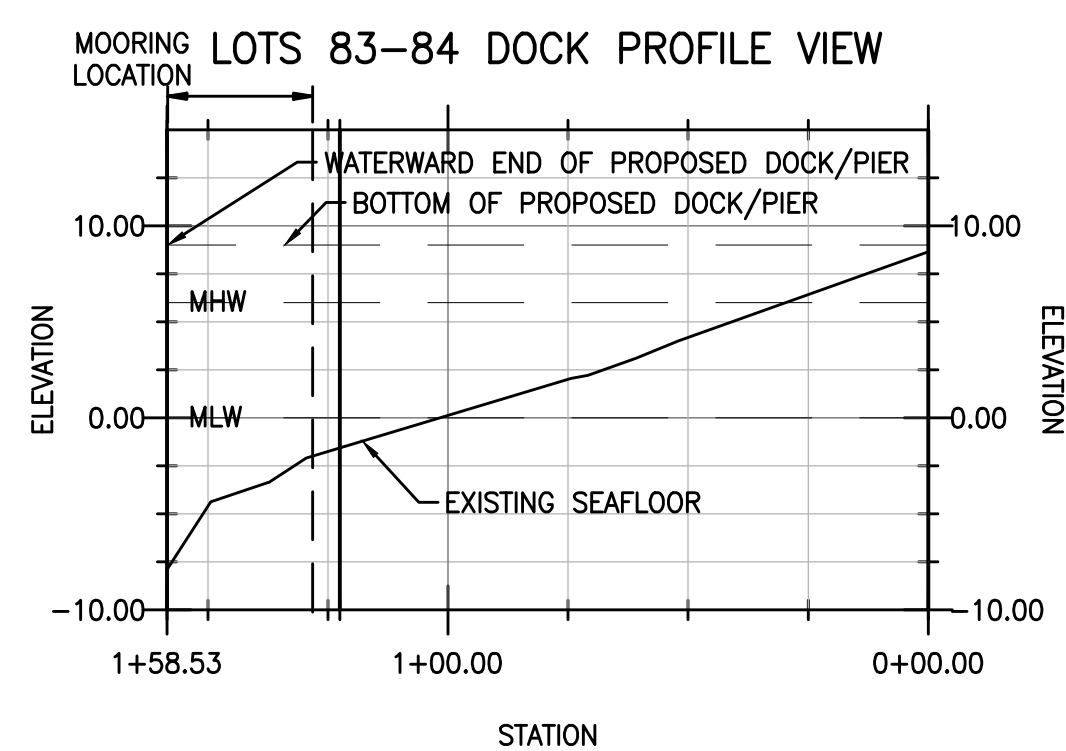
LOTS 81-82 DOCK



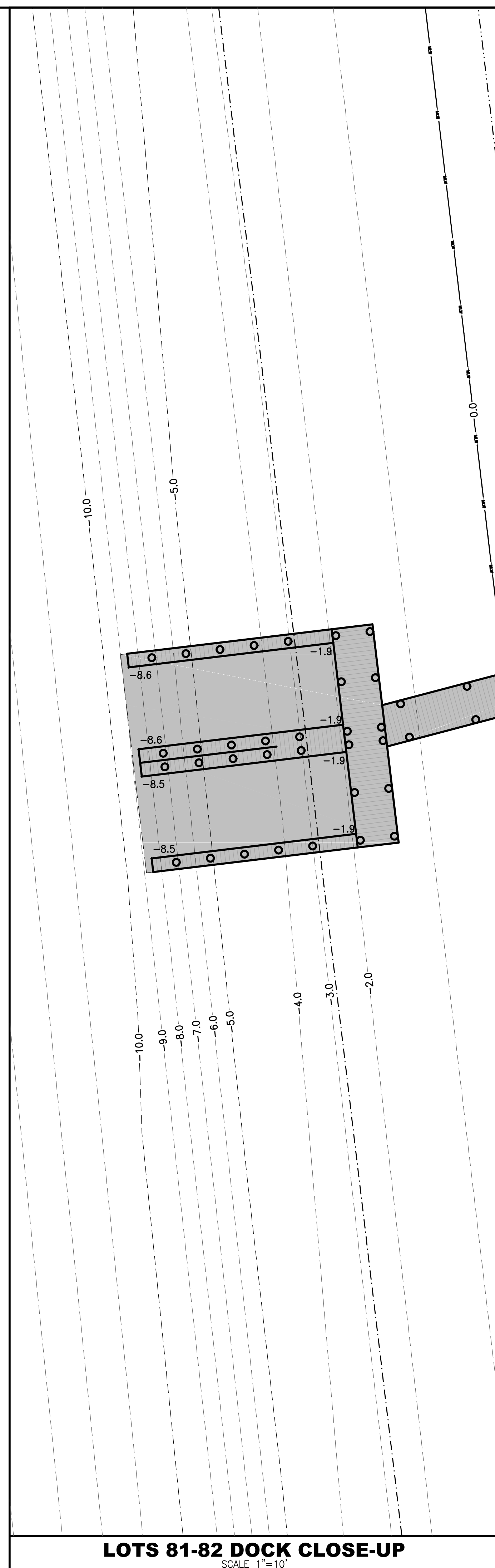
LOTS 81-82 DOCK PROFILE



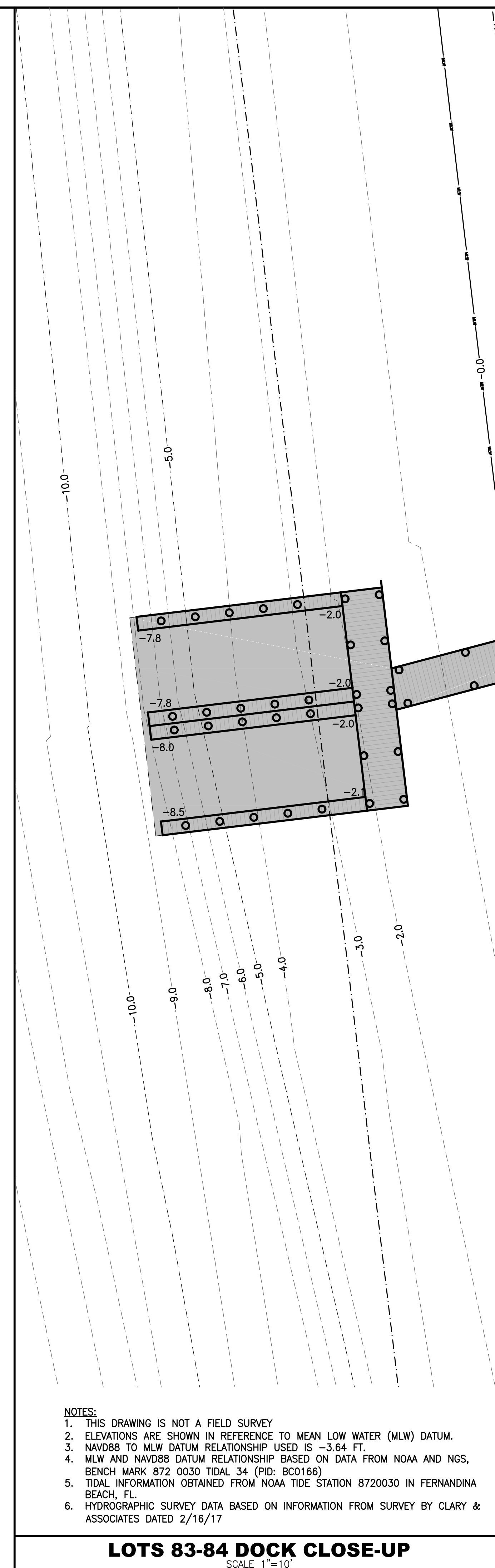
LOTS 83-84 DOCK



LOTS 83-84 DOCK PROFILE



LOTS 81-82 DOCK CLOSE-UP



LOTS 83-84 DOCK CLOSE-UP

- NOTES:
- THIS DRAWING IS NOT A FIELD SURVEY
 - ELEVATIONS ARE SHOWN IN REFERENCE TO MEAN LOW WATER (MLW) DATUM.
 - NAVD83 TO MLW DATUM RELATIONSHIP USED IS -3.64 FT.
 - MLW AND NAVD83 DATUM RELATIONSHIP BASED ON DATA FROM NOAA AND NGS, BENCH MARK 872 0030 TIDAL 34 (PID: BC0166)
 - TIDAL INFORMATION OBTAINED FROM NOAA TIDE STATION 8720030 IN FERNANDINA BEACH, FL.
 - HYDROGRAPHIC SURVEY DATA BASED ON INFORMATION FROM SURVEY BY CLARY & ASSOCIATES DATED 2/16/17

REVISIONS

NO.	DESCRIPTION	DATE

DATE ISSUED: 06/22/2018

REVIEWED BY: MAC

DRAWN BY: CBS

DESIGNED BY: CBS

AEP PROJECT NUMBER
 501-0223-000

© 2017, RS&H, INC.

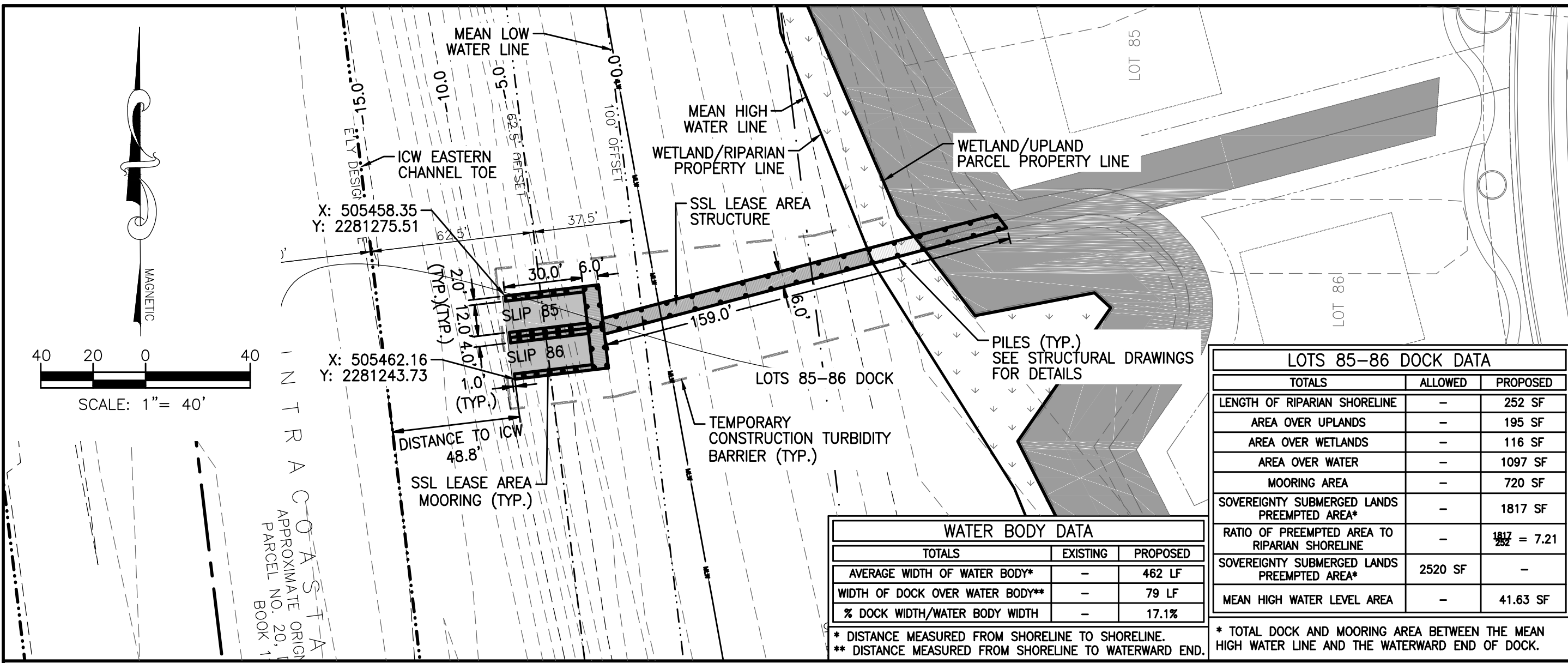
SHEET TITLE

**CRANE ISLAND DOCKS
 PROPOSED PLAN
 DETAILS**

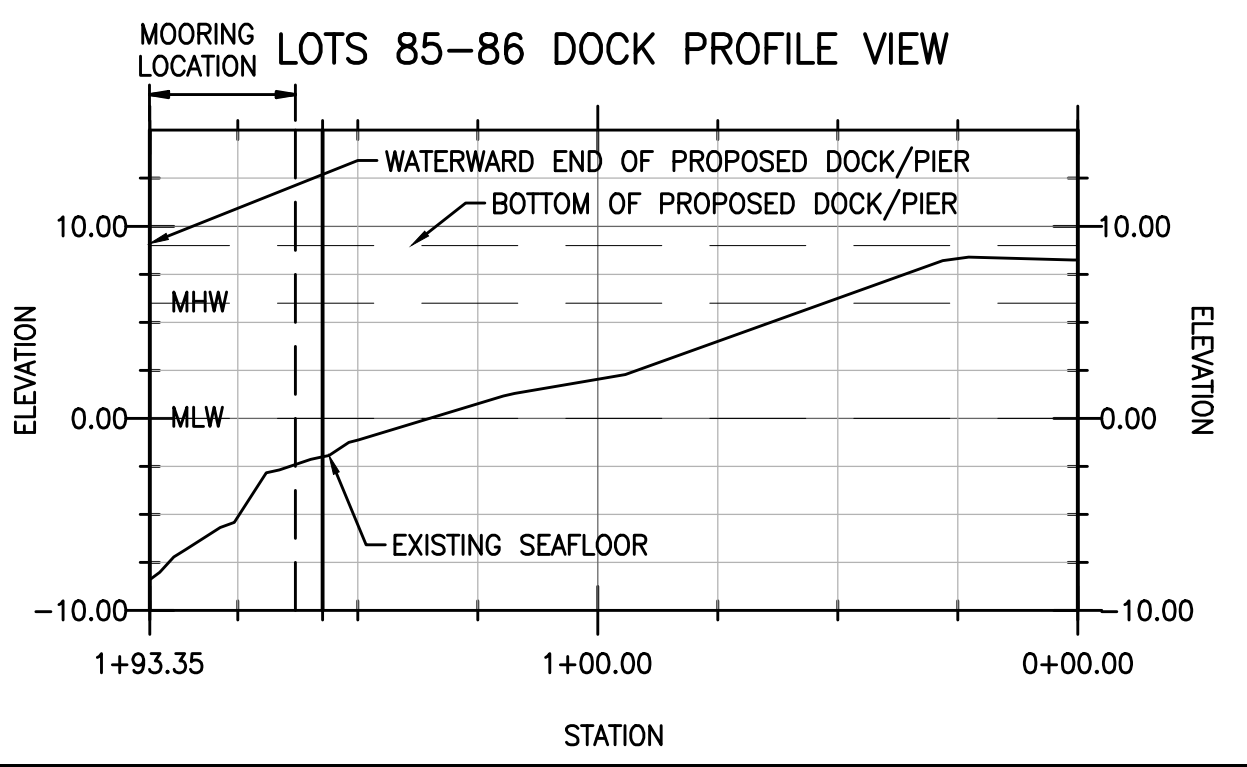
SHEET NUMBER

C-107

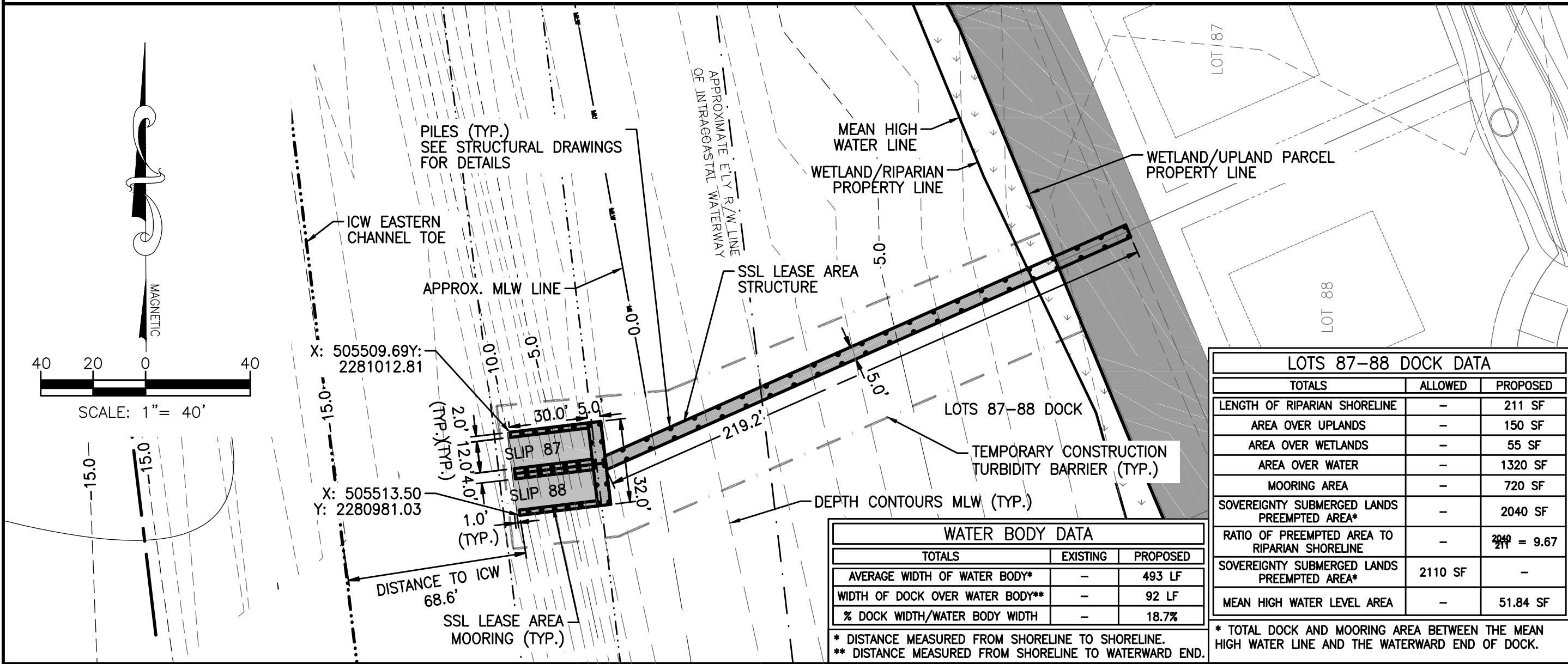
PERMIT SET



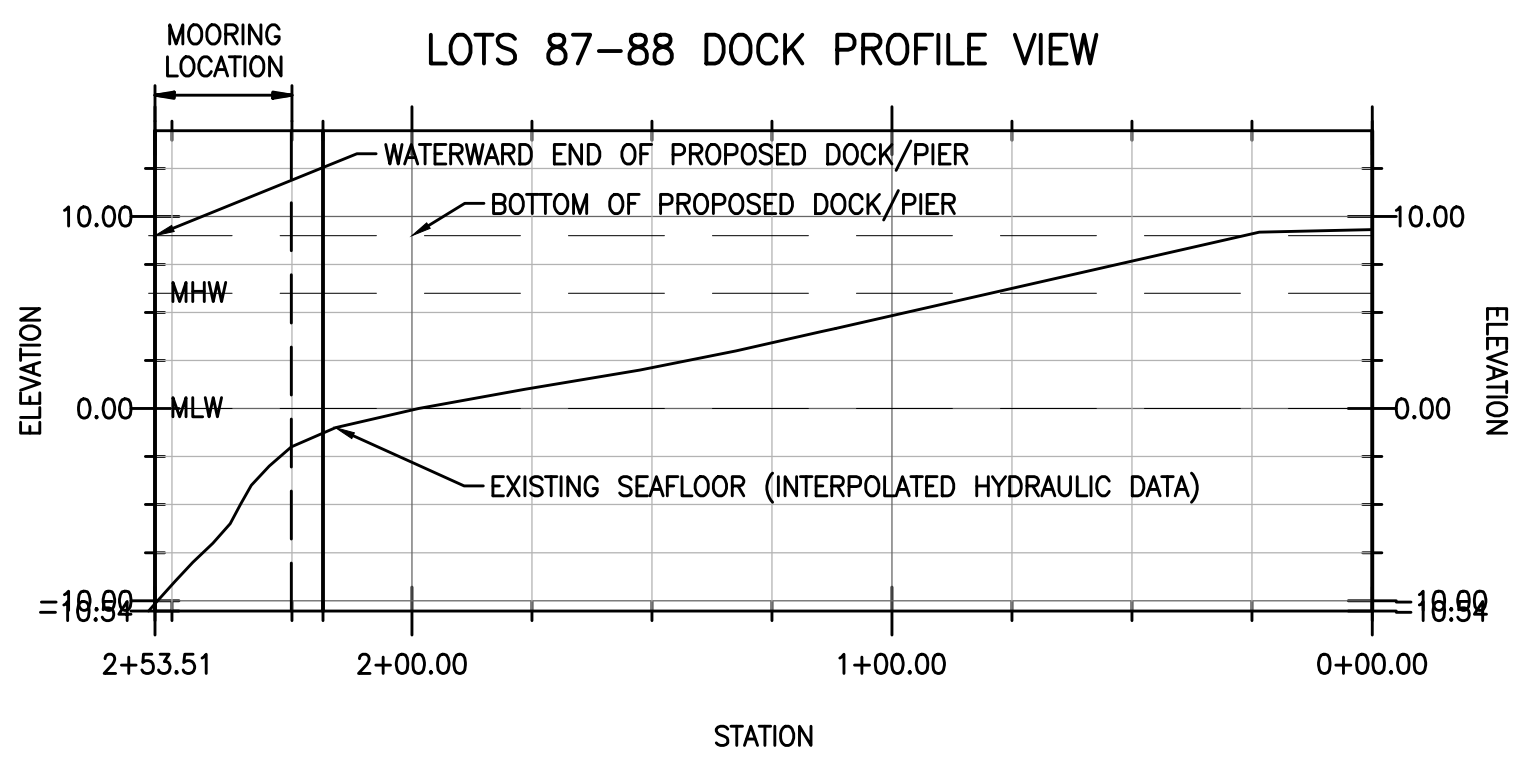
LOTS 85-86 DOCK



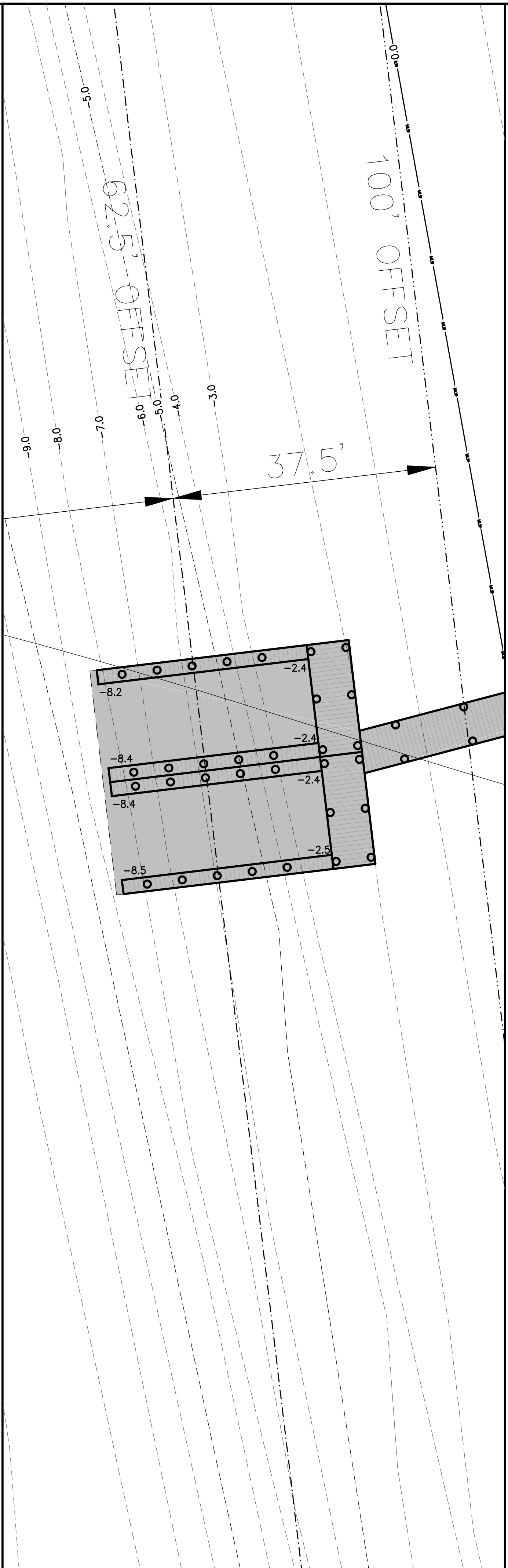
LOTS 85-86 DOCK PROFILE



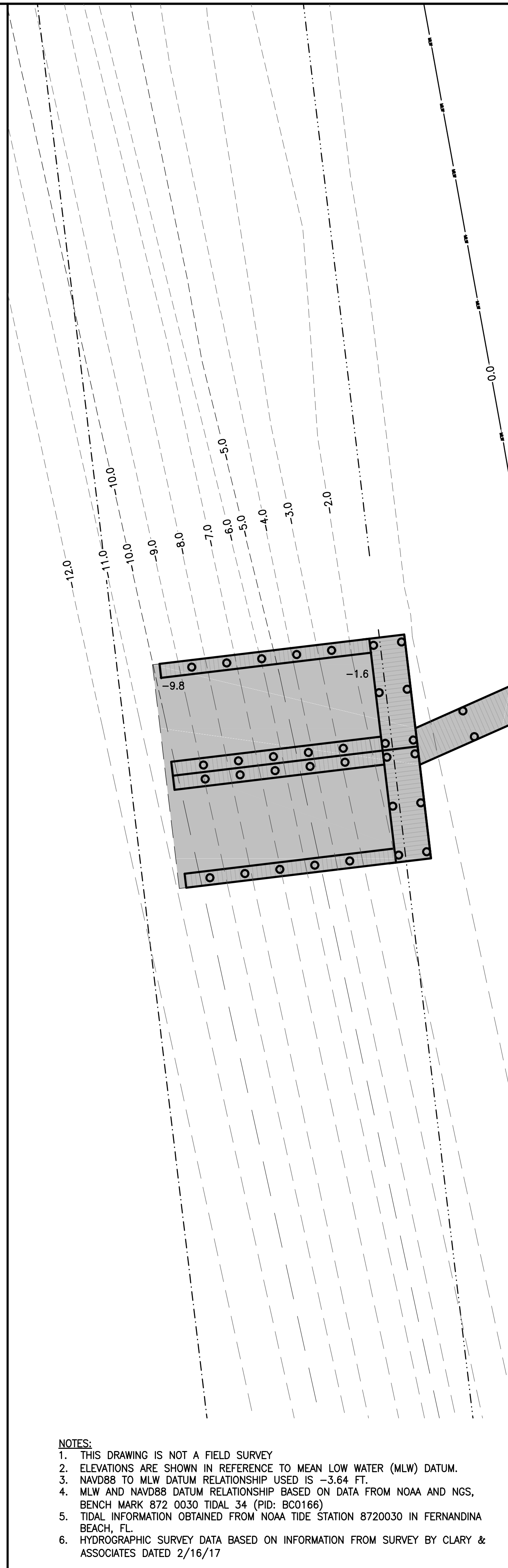
LOTS 87-88 DOCK



LOTS 87-88 DOCK PROFILE



LOTS 85-86 DOCK CLOSE-UP



LOTS 87-88 DOCK CLOSE-UP

- NOTES:
- THIS DRAWING IS NOT A FIELD SURVEY
 - ELEVATIONS ARE SHOWN IN REFERENCE TO MEAN LOW WATER (MLW) DATUM.
 - NAVD88 TO MLW DATUM RELATIONSHIP USED IS -3.64 FT.
 - MLW AND NAVD88 DATUM RELATIONSHIP BASED ON DATA FROM NOAA AND NGS, BENCH MARK 872 0030 TIDAL 34 (PID: BC0166)
 - TIDAL INFORMATION OBTAINED FROM NOAA TIDE STATION 8720030 IN FERNANDINA BEACH, FL.
 - HYDROGRAPHIC SURVEY DATA BASED ON INFORMATION FROM SURVEY BY CLARY & ASSOCIATES DATED 2/16/17

REVISIONS

NO.	DESCRIPTION	DATE

DATE ISSUED: 06/22/2018

REVIEWED BY: MAC

DRAWN BY: CBS

DESIGNED BY: CBS

AEP PROJECT NUMBER
 501-0223-000

© 2017, RS&H, INC.

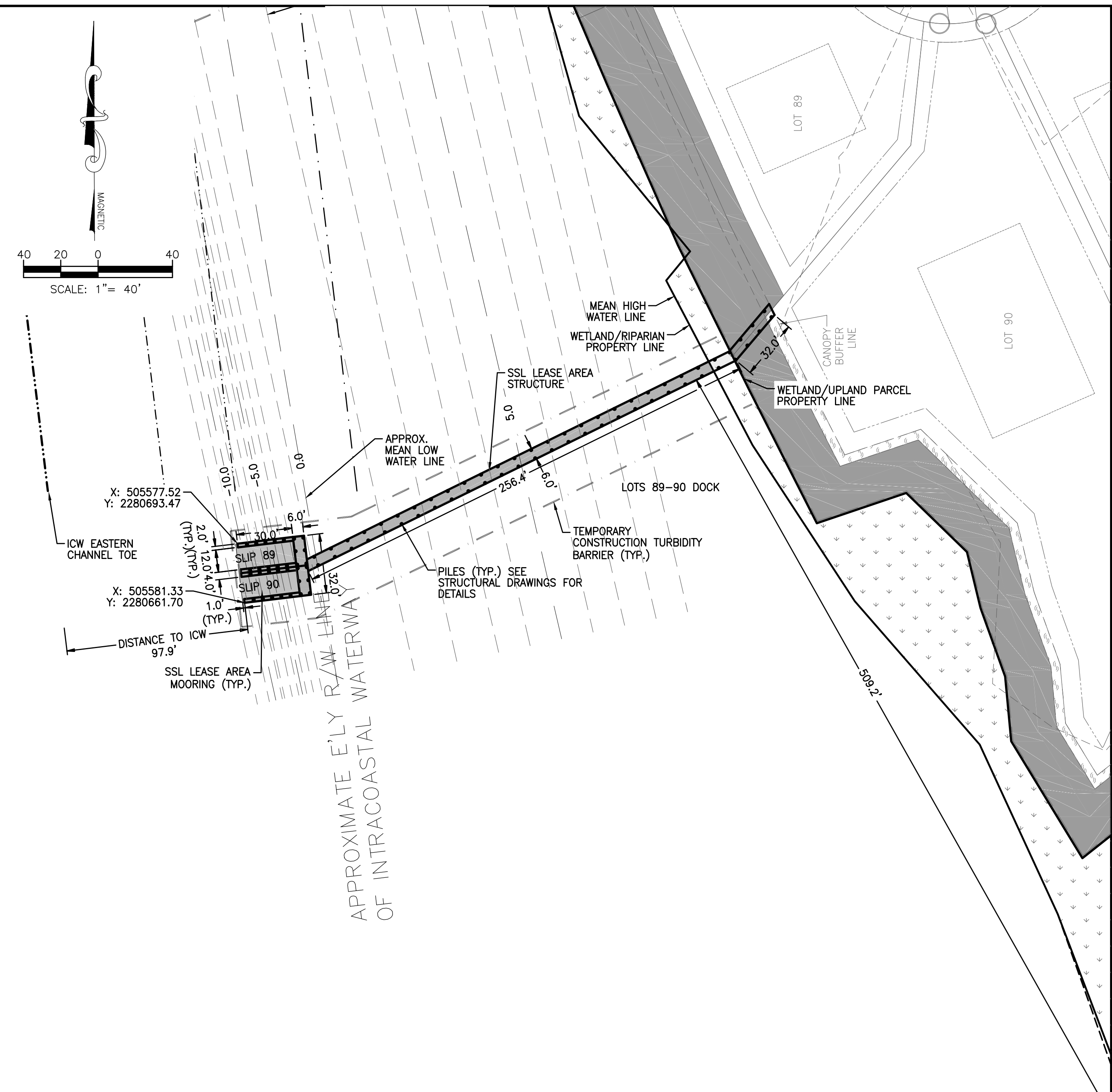
SHEET TITLE

**CRANE ISLAND DOCKS
 PROPOSED PLAN
 DETAILS**

SHEET NUMBER

C-108

PERMIT SET

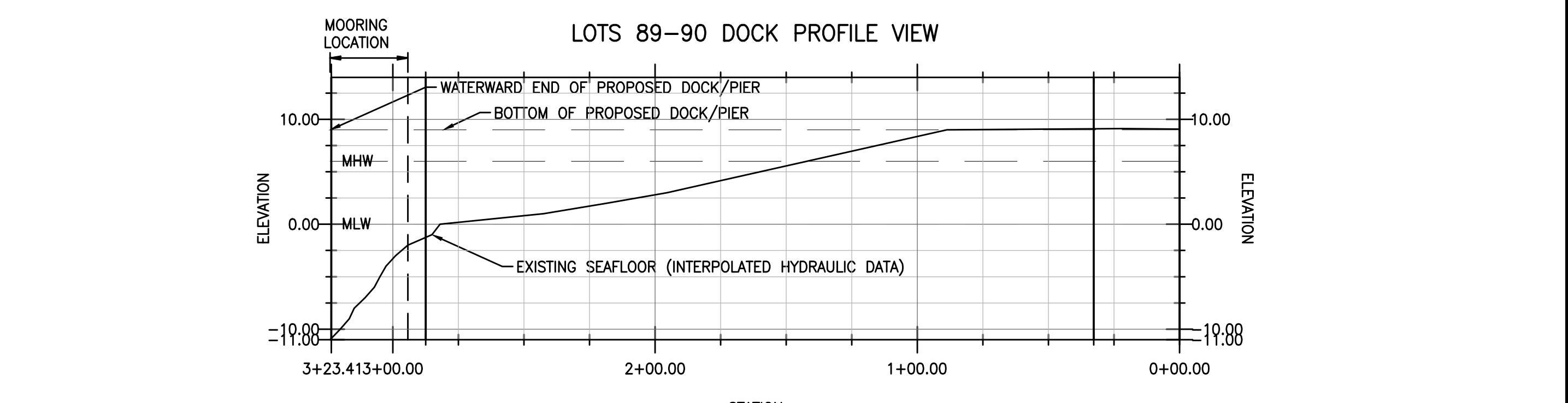


TOTALS	ALLOWED	PROPOSED
LENGTH OF RIPARIAN SHORELINE	-	547 SF
AREA OVER UPLANDS	-	196 SF
AREA OVER WETLANDS	-	76 SF
AREA OVER WATER	-	1916 SF
MOORING AREA	-	720 SF
SOVEREIGNTY SUBMERGED LANDS PREEMPTED AREA*	-	2636 SF
RATIO OF PREEMPTED AREA TO RIPARIAN SHORELINE	-	4.82
SOVEREIGNTY SUBMERGED LANDS PREEMPTED AREA*	5470 SF	-
MEAN HIGH WATER LEVEL AREA	-	62.83 SF

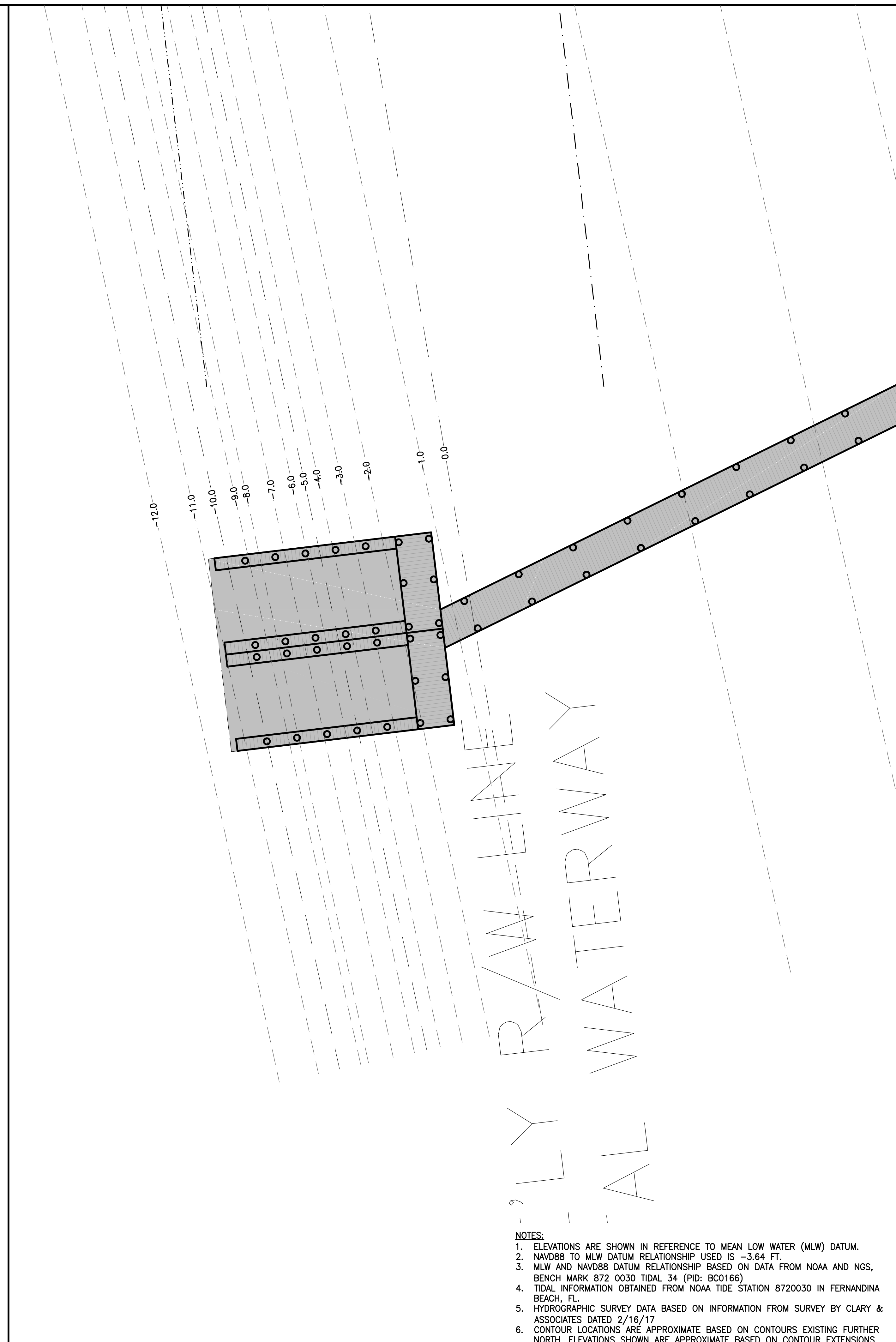
TOTALS	EXISTING	PROPOSED
AVERAGE WIDTH OF WATER BODY**	-	539 LF
WIDTH OF DOCK OVER WATER BODY**	-	106 LF
% DOCK WIDTH/WATER BODY WIDTH	-	19.7%

* TOTAL DOCK AND MOORING AREA BETWEEN THE MEAN HIGH WATER LINE AND THE WATERWARD END OF DOCK.
 ** DISTANCE MEASURED FROM SHORELINE TO SHORELINE.
 ** DISTANCE MEASURED FROM SHORELINE TO WATERWARD END.

LOTS 89-90 DOCK



LOTS 89-90 DOCK PROFILE



LOTS 89-90 DOCK CLOSE-UP

- NOTES:
- ELEVATIONS ARE SHOWN IN REFERENCE TO MEAN LOW WATER (MLW) DATUM.
 - NAVD88 TO MLW DATUM RELATIONSHIP USED IS -3.64 FT.
 - MLW AND NAVD88 DATUM RELATIONSHIP BASED ON DATA FROM NOAA AND NGS, BENCH MARK 872 0030 TIDAL 34 (PID: BC0166)
 - TIDAL INFORMATION OBTAINED FROM NOAA TIDE STATION 8720030 IN FERNANDINA BEACH, FL.
 - HYDROGRAPHIC SURVEY DATA BASED ON INFORMATION FROM SURVEY BY CLARY & ASSOCIATES DATED 2/16/17
 - CONTOUR LOCATIONS ARE APPROXIMATE BASED ON CONTOURS EXISTING FURTHER NORTH. ELEVATIONS SHOWN ARE APPROXIMATE BASED ON CONTOUR EXTENSIONS.