



PHOTO: LAUREY W. GLENN/SOUTHERN LIVING

Southern Living
IDEAHOUSE

AMELIA ISLAND, FL | 2019

STYLE GUIDE

THE IDEA HOUSE TEAM

COMMUNITY

Crane Island
craneisland.com
904.432.8390

BUILDER

Riverside Homes
myriversidehome.com
904.530.4720

ARCHITECT

Historical Concepts
historicalconcepts.com
678.325.6665

INTERIOR DECORATOR

Heather Chadduck
Interiors & Textiles
heatherchadducktextiles.com
205.336.7800

LANDSCAPE ARCHITECT

Hooten Land Design, Inc.
hootenlanddesign.com
404.373.9816

CHARITY

Amelia Island
Museum of History
ameliamuseum.org
904.261.7378

HOUSE DETAILS

4 BEDS | 1 BUNK ROOM
5.5 BATHS
4,540 SQUARE FEET

FOR MORE INFORMATION

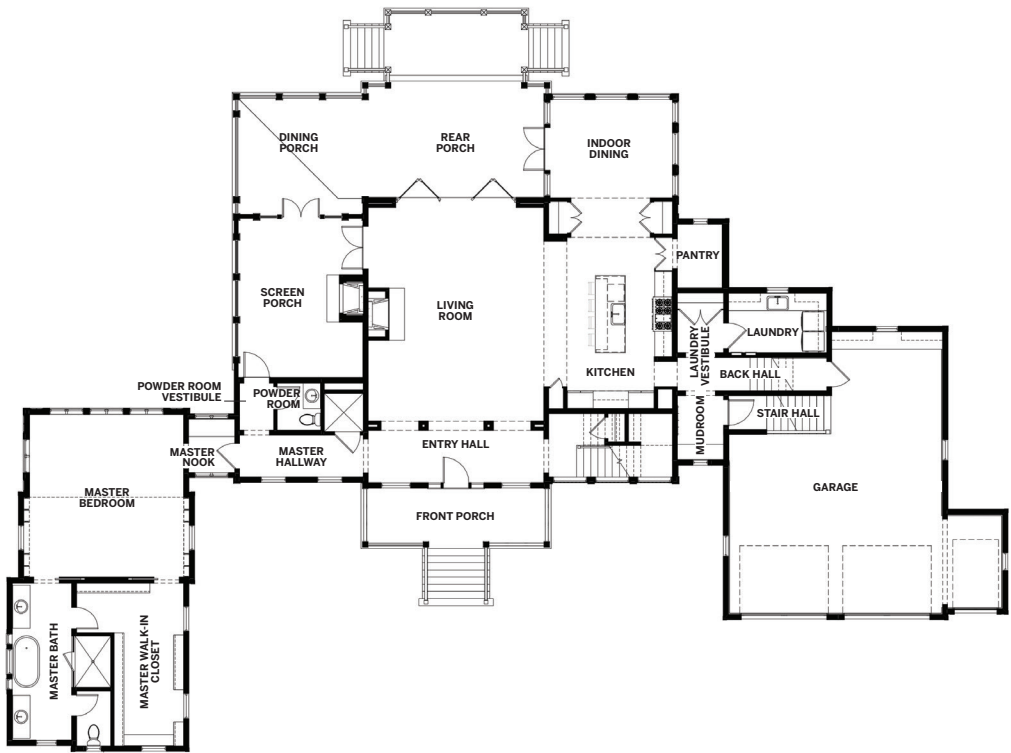
SOUTHERNLIVING.COM/
IDEAHOUSE

—
Look for the full editorial
feature in the August issue
of Southern Living,
on newsstands July 19th.

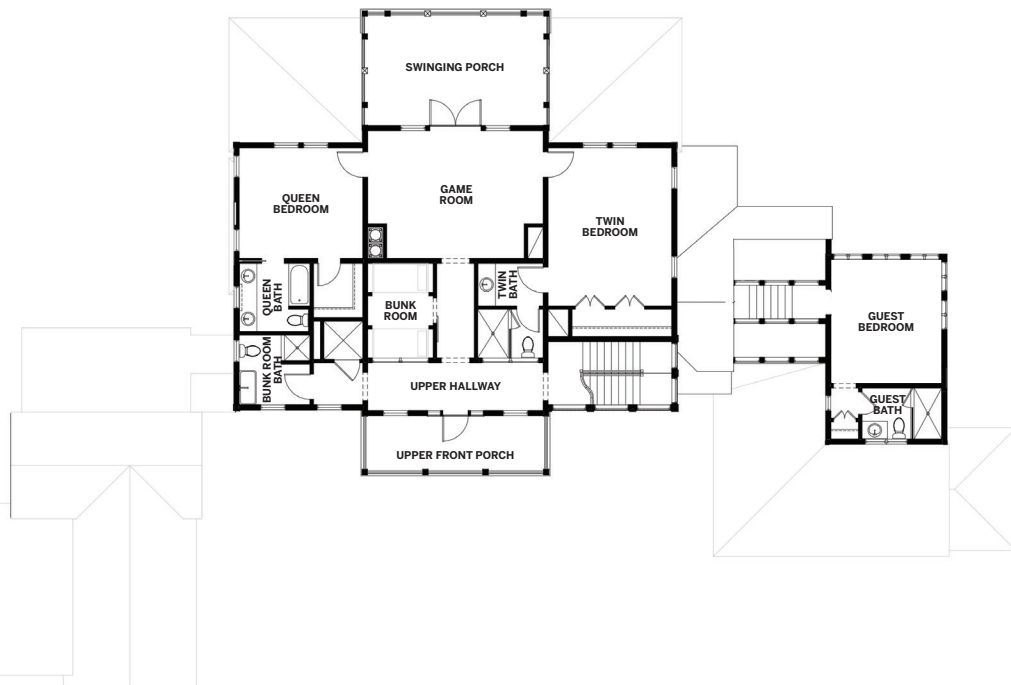
FLOOR PLAN

THE SOUTHERN LIVING IDEA HOUSE PLAN CAN BE YOURS!
SOUTHERNLIVINGHOUSEPLANS.COM

FIRST FLOOR



SECOND FLOOR



THROUGHOUT

Windows and Exterior Doors: Marvin® (see rooms for details). **Hardwood Flooring Product/Installation:** Dimensions in Tile and Stone- Villa Borghese/French Oak in Galgano. **Interior Door Paint:** Sherwin-Williams- SW 0050 Classic Light Buff. **Window Treatment Fabrication:** The Window Dressers. **Interior Door Knobs:** Emtek- Providence Knob, Flat Back Rose with Unlacquered Brass Knob. **Door Stops:** Emtek- Flat Black. **Toilets:** Toto- Promenade II. **Closets:** Turners Specialty & Hardware Inc. **Cabinets and Vanities:** First Coast Supply- Decora & Custom Cabinets. **Mattresses:** The Real Sleep™ Mattress by Real Simple. **Wallpaper Installation:** Ken Ledford Wallpaper Installation. **Interior Doors:** Ecco Doors Manufacturing, LLC. **Shower Doors:** Turners Specialty & Hardware Inc. **Tile Installation:** Dimensions in Tile and Stone. **HVAC:** AC Masters. **Engineering:** Apex Technology. **Structured Wiring/Security:** Five Smooth Stones Audio Video & More. **Trim Labor:** Chandler's Trim, Inc., First Coast Finish Carpenters, Hickory Creek Builders, R&T Trim and Wilson Carpentry, LLC. **Trim Material:** WFP, Inc. **Painters:** Fresh Coat Custom Painting. **Trim Material/Framing Material:** Manning Building Supply. **Plumbing:** Nelson Plumbing, Inc. **Drywall Labor:** Top Line Drywall, LLC. **Electrician:** Tri County Electrical Contractors, Inc. **Tile Grout:** MAPEI Corporation.

EXTERIOR/LANDSCAPING

Windows and Exterior Doors: Marvin® (see rooms for details). **Paint:** Sherwin-Williams- Exterior Body, French Doors and Bi-Fold Doors in SW 9166 Drift of Mist: Front Entry Door and Porch Entry Door in SW 9140 Blustery Sky, Shutters and Garage Doors in SW 9139 Debonair and Porch Ceilings in SW 6232 Misty. **Siding and Trim:** James Hardie® Building Products- Main Body in Artisan Lap Siding and Hardie Trim Board and Batten, Window and Door Trim in Artisan Trim with Historic Sills and Bed Mould with a Cap, Cornice Details in 5-1/4" and 3-1/4" Crown Profiles, Porch Ceilings in Artisan V-Groove Siding, Decorative Details on Exterior Stairhall in Hardie Sheet Goods with Artisan Lap Siding (custom fabrication) and Louvers in Artisan Lap Siding (custom fabrication). **Decking:** Zuri® Premium Decking- Weathered Gray and Chestnut. **Railings and Columns:** Royal Building Products- Custom Fabrication. **Garage Doors:** Clopay- Canyon Ridge Collection. **Exterior Lanterns:** Carolina Lanterns & Lighting (see outdoor spaces for details). **Garage Lanterns:** Carolina Lanterns & Lighting- Single House Wall Mounts. **Awning:** SunSetter Products- Platinum Awning with Navy/Taupe Fancy Sunbrella Fabric. **Swing:** Reid Classics- Custom Mahogany Swing. **Custom Shutters:** John Green Builds. **Roof Material:** Gulf Coast Supply & Manufacturing- Dark Bronze 0.032 Aluminum GulfLok. **Roofing Labor:** Top Gun Roofing, Inc. **Plant Materials:** Southern Living Plant Collection. **Landscaping:** All Terrain Landscaping. **Pavers:** Casa-Contracting- Tremron Pavers. **Siding Installation:** Sims Aluminum Construction, Inc. **Foundation:** Concrete Masters. **Surveyors:** Manzie & Drake Land Surveying. **Exterior Trim Carpenter:** Miller Home Construction. **Trusses:** True House, Inc. **Mosquito Misting System:** MosquitoNix. **Entry Door/Porch Entry Door Hardware:** Brandino Brass Co.-Custom Rim Lock. **Painters:** Fresh Coat Custom Painting. **Trim Material/Framing Material:** Manning Building Supply.

FIRST FLOOR

FRONT PORCH

Windows: Marvin®- Clad Ultimate Double Hung- Next Generation 2.0. **Decking:** Zuri® Premium Decking- Weathered Gray. **Railings and Columns:** Royal Building Products- Custom Fabrication. **Lanterns:** Carolina Lanterns & Lighting- Charleston Hanging Yoke Mount and Single House Wall Mounts. **Entry Door:** painted in Sherwin-Williams SW 9140 Blustery Sky. **Concrete Pot Planters:** Birch Lane. **Rocking Chairs:** Birch Lane- One Ladder Back Rocking Chairs. **Rosemary Topiaries:** Revelation Design. **Entry Door Hardware:** Brandino Brass Co.- Custom Rim Lock.

ENTRY HALL

Windows: Marvin®- Clad Ultimate Double Hung- Next Generation 2.0. **Paint:** Sherwin-Williams- Trim, Ceiling and Columns in SW 7008 Alabaster and Front Door in SW 9140 Blustery Sky. **Wallpaper:** Gracie Studio- Custom. **Lanterns:** Circa Lighting- Lorford Smoke Bell Lanterns (#CHC 2270AI-MG). **Drapery Fabric:** Fabricut- Acquaintance in Silver. **Drapery Fabric Trim:** Abbot & Atlas- Brush Stripe in Aegean Blue. **Drapery Hardware:** Antique Drapery Rod Company- Hotel Artistes. **Entry Door:** Vintage Doors. **Entry Door Hardware:** Brandino Brass Co.- Custom Rim Lock. **Consoles:** Salt Cottage Home- Mandalay Demilune Console in Walnut. **Cache Pots:** Avala International, Inc. **Orchid Arrangements:** Revelation Design.

MASTER HALLWAY

Windows: Marvin®- Clad Ultimate Double Hung- Next Generation 2.0. **Paint:** Sherwin-Williams- Walls, Trim and Ceiling in SW 7566 Westhighland White. **Roman Shade Fabric:** Abbot & Atlas- Cycladic Stripe in Cobalt. **Pendants:** Clarkson Lighting- Westminster 3-Light Pendant (#65047-715). **Console Table:** Heather Chadduck Interiors- Antique. **Art:** David Hillegas Photography- "Shell Shop" Montego Bay, Jamaica. **Antique Trunks/Baskets:** Heather Chadduck Interiors. **Blue & White Urn, Blue & White Container and White Bracket:** Avala International, Inc.

POWDER ROOM VESTIBULE

Door: Marvin®- Clad Ultimate Outswing French Door with Clad Ultimate Awning- Stationary Transom. **Paint:** Sherwin-Williams- Walls, Trim and Ceiling in SW 7566 Westhighland White. **Ceiling Light:** Circa Lighting- Bolsena Deco Flush Mount (#ARN 4047G). **Mirrors:** Universal Furniture- Escape, Coastal Living Collection Long Key Mirror.

POWDER ROOM

Paint: Sherwin-Williams- Trim and Wainscot in SW 6228 Refuge and Ceiling in SW 9137 Niebla Azul. **Wallpaper:** Meg Braff Designs- Little Egypt in Iznik on White. **Ceiling Light:** Circa Lighting- Re Flush Mount (SK 4000GI). **Sconces:** Circa Lighting- Hulton Sconces (#TOB 2190HAB-NP). **Pedestal Sink:** Birch Lane-Templeton Marble Rectangular Undermount Bathroom Sink. **Faucet:** Fixtures & Finishes/Waterworks- Highgate Faucet in Unlacquered Brass. **Hand Towels:** Leontine Linens- Dorian in Robins Egg Linen with Southampton Stitch. **Waste Basket:** Birch Lane- Samira Waste Basket. **Brass Shell:** Heather Chadduck Interiors. **Soap:** Cape House. **Mirror:** Heather Chadduck Interiors & Textiles and JW Frame Gallery.

MASTER NOOK

Windows: Marvin®- Clad Ultimate French Casement. **Paint:** Sherwin-Williams- Walls and Trim in SW 7566 Westhighland White and Ceiling in SW 7005 Pure White. **Ceiling Light:** Circa Lighting- Siena Small Flush Mount (#SS 4015BZ-WG). **Sconces:** Circa Lighting- Venice Sconces (#TOB 2221BZ-AM). **Display Lamp:** Circa Lighting- Estelle Display Lamp (AH 3500NB). **Roman Shade Fabric:** Heather Chadduck Textiles- Little Bamboo in Chocolate. **Roman Shade Trim:** Fabricut- Sash in Bayleaf. **Dresser:** Salt Cottage Home- Indigo Coast Dresser in Adobe. **Framed Painting:** Heather Chadduck Interiors-Antique/Original. **Additional Accessories:** Heather Chadduck Interiors.

MASTER BEDROOM

Windows: Marvin®- Clad Ultimate Double Hung- Next Generation 2.0 and Clad Ultimate French Casements. **Paint:** Sherwin-Williams- Walls, Trim and Ceiling in SW 7566 Westhighland White. **Pendants:** Clarkson Lighting- Westminster 3-Light Pendant (#65047-715). **Sconces:** Circa Lighting- Kassel Single Sconce (#S 2107NI). **Bedside Lamps:** Circa Lighting- Lambay Table Lamp (#CHA 8661ICB-NP). **Table Lamp:** Circa Lighting- Addison Medium Table Lamp (#CS 3602MBZ-PL). **Floor Lamp:** Circa Lighting- Hackney Floor Lamp (#SP 1022BZ-NP). **Drapery Fabric:** Heather Chadduck Textiles- Grande Frond in Olive. **Drapery Hardware:** Gowan Iron. **Window Shades:** Horizons Window Fashions- Classic Waterfall Shades in Vintage Malibu. **Sofa:** LEE Industries- 7733-11 in Sahara Dune Green with Banded Skirt in Pinafore Haze. **Accent Pillows:** Bunny Williams Home- Bambala Pillows in Brown. **Chairs:** LEE Industries- 3278-01 Chairs in Cowtan & Tout Fabric- Rose & Hydrangea in Platinum. **Cocktail Table:** Century Furniture- Thomas O'Brien Calliope Cocktail Table with Stone Top. **Round Side Table:** Bunny Williams Home- Asta Side Table. **Drinks Table:** Bunny Williams Home- Kingsley Drinks Table. **Custom Bed:** Reid Classics- Four Poster Solid Mahogany Bed, Rolling Pin Style in American Walnut Color. **Bed Canopy Fabric:** Heather Chadduck Textiles- Grande Frond in Olive. **Bed Canopy Workroom:** Design Industry by Grant Trick. **Coverlet, Pillow Shams and Inserts:** Southern Living Exclusively at Dillard's. **Duvet & Pillowcases with Green Trim:** Peacock Alley. **Bolster Fabric:** Quadrille/China Seas- Sunnyjim All Over, Taupe on Tint. **Custom Bedside Tables:** Fabulous Things, LTD. **Sisal Rug:** Fibreworks- Bakari 479, Oat Straw. **Antique Mirror over Bed:** Heather Chadduck Interiors. **Basket (holding tree):** Mainly Baskets. **Additional Accessories:** Heather Chadduck Interiors.

MASTER BATH

Windows: Marvin®- Clad Ultimate Double Hung- Next Generation 2.0, Clad Ultimate Double Hung Picture- Next Generation 2.0 and Integrity Traditional Double Hung. **Paint:** Sherwin-Williams- Trim and Wainscot in SW 7566 Westhighland White, Ceiling in SW 7005 Pure White and Vanities in SW 7739 Herbal Wash. **Wallpaper:** Ainsworth-Noah/Jasper by Michael Smith- Indian Flower in Brown. **Chandelier:** Circa Lighting- O'Connor Chandelier (#ARN5202HAB/ALB). **Sconces:** Circa Lighting- Radford Small Sconces

(RL 2570NB/NRO-PL). **Curtain Fabric:** Fabricut- Pure Elegance Linen Sheers, Out of Line in Tussah. **Curtain Hardware:** Antique Drapery Rod Company- Hotel Rods and Rings in Italian Walnut. **Vanity Countertops:** First Coast Supply- Monte Blanc Quartzite Flat Polish. **Vanity & Bathroom Hardware:** Emtek- Providence Knobs. **Sink Faucets:** Brizo- Tresa Widespread Lavatory in Polished Nickel. **Sinks:** Kohler- Verticyl Rectangle UM Sink in White. **Mirrors:** Made Goods- Rex. **Tub:** Cheviot-Balmoral Cast Iron Bath in Custom Color (Sherwin-Williams- SW 2816 Rookwood Dark Green). **Tub Faucet:** Brizo- Tresa Two-Handled Tub Filler with Cross Handles in Polished Nickel. **Shower Fixtures:** Brizo- Traditional Pressure Balance Shower and Wall- Mount Hand Shower in Polished Nickel. **Shower Tile:** Crossville Studios- Walls in 24"x48" and Floors in 2" Hexagon. **Stools in Shower:** Avala International, Inc. **Runner:** Annie Selke/Dash & Albert- Zinnia Oak Woven Jute Rug. **Baskets:** Birch Lane- Coastal Rattan Storage Baskets. **Towels:** Southern Living Exclusively at Dillard's- White Zero Twist Towels. **Soap Dishes:** Two's Company. **Soap and Chamomile Bubble Bath:** Cape House- Meri/Sea. **Art:** Heather Chadduck Interiors. **Waste Basket:** Birch Lane- Samira Waste Basket.

MASTER WALK-IN CLOSET

Windows: Marvin®- Integrity Traditional Double Hung. **Paint:** Sherwin-Williams- Walls, Ceiling and Trim in SW 7005 Pure White. **Curtain Fabric:** Fabricut- Pure Elegance Linen Sheers, Out of Line in Tussah. **Curtain Hardware:** Antique Drapery Rod Company- Hotel Rods and Rings in Italian Walnut. **Ottoman:** LEE Industries- 1623-90 in Stonegate Grey with Skirt. **Luggage Rack:** Birch Lane- Arreola.

LIVING ROOM

Doors: Marvin®- Clad Ultimate Outswing Bi-Fold Door and Clad Ultimate Outswing French Door with Clad Ultimate Casement Picture Transom. **Paint:** Sherwin-Williams- Walls, Trim and Bookcases in SW 0050 Classic Light Buff, Interior Back Walls of Bookcases in SW 9138 Stardew and Ceiling in SW 7005 Pure White. **Bookcases:** First Coast Supply. **Bookcase Hardware:** Emtek- Providence Knobs. **Drapery Fabric:** Fabricut- Acquaintance in Silver. **Drapery Fabric Trim:** Abbot & Atlas- Brush Stripe in Aegean Blue. **Drapery Hardware:** Antique Drapery Rod Company- Hotel Artistes. **Lantern:** Circa Lighting- Pondview Medium Jar Lantern (ARN 5200HAB). **Sconces:** Circa Lighting- Georgian Small Hurricane Wall Scones (CHD 2102BZ). **Picture Lights:** Circa Lighting- David 12" Art Light (TOB 2021BZ/HAB). **Fireplace Surround and Hearth:** First Coast Supply. **Faux Painted Beams:** The Artistree. **Sofa:** LEE Industries- 3278-44 in Sulton Pebble. **Accent Pillows:** Heather Chadduck Interiors: Fabrics- JAMES Showroom/Carolina Irving, Andaluz/Sepia AND 03; Abbot & Atlas, Brush Stripe Aegean Blue on Belgian; Travis & Company- Penny Morrison, Ashok Petrol on Natural; Schumacher, Corfu Stripe 177970 Navy; Thibaut, Mali Printed Fabric in Navy AF78717. All with Fabricut Mini Mocha ½" Trim. **Chairs Flanking the Fireplace:** LEE Industries- 1442-01 in Sanibel Ocean Fabric with Smoke Finish. **Accent Chair:** LEE Industries- 1863-01 in Migration Blue with Smoke Finish. **Antique Sofa:** Heather Chadduck Interiors- Front Fabric in Galbraith & Paul, Seville Medallion in Walnut and Back Fabric in Penny Morrison, Ashok Petrol on Natural by Travis & Company. **Farm Table:** Heather Chadduck Interiors. **Coffee Table:** Heather Chadduck Interiors- Antique. **Octagonal Table Fabric:** Galbraith & Paul, Seville Medallion in Walnut with Trim from the Fringe Market, Diamond Triple Knot in Linen Blend. **Upholstered Stools:** LEE Industries-9399-10 in Meridian Light Blue, Meridian Pewter and Meridian Jasper. **Console:** Salt Cottage Home- Mandalay Console in Walnut. **Upholstered Ottoman:** LEE Industries-9133-10 in JAMES Showroom/Carolina Irving Fabric with Smoke Finish and Brass Casters. **Floor Lamps:** Circa Lighting- Studio Adjustable Floor Lamps (91025 HAB). **Table Lamps on Console:** Circa Lighting- Gilded Iron Decorative Table Lamps (SP 3015GI/CG-NP). **Antique Lamps:** Heather Chadduck Interiors- Antique Wine Bottles. **Antique Lamp Shades:** Edgar-Reeves Lighting- Fabric by Schumacher, Corfu Stripe Navy 177970. **Rug:** Kings House Oriental Rugs- Hand Woven Turkish Kelim Wool Rug, Louise. **Brass Picture Rail:** Picture Hanging Systems, Ltd. **Artwork:** Ornis Gallery- Swedish Crane and Heather Chadduck Interiors. **Blue and White Pots:** Heather Chadduck Interiors. **Blue & White Rectangular Box and Blue & White Plates:** Avala International, Inc. **Throws, Andirons, Bolsters, Garden Stools and Additional Accessories:** Heather Chadduck Interiors.

KITCHEN

Paint: Sherwin-Williams- Walls, Trim and Cabinets in SW 7657 Tinsmith and Ceiling in SW 7005 Pure White. **Wallpaper Behind Range & Bar:** Gracie Studio- SY 300 New World. **Faux Painted Outlets:** The Artistree. **Pendants:** Clarkson Lighting- Urban Renewal Mini Pendant (P1236ASTB). **Picture Light:** Circa Lighting-McClain 42" Hardwired Picture Light (SP 2605BZ). **Custom Plastered Hood:** The Artistree. **Sink Faucet & Pot Filler:** Brizo- Artesso in Polished Nickel. **Farm Sink:** Rohl- Shaws Original Farm Sink. **Appliances:** First Coast Supply/Thermador-Panel Ready Refrigeration Column (T30IR900SP), Panel Ready Freezer Column (T30IF900SP), Dual Fuel Pro Grand Range (PRD486WDGU), Panel Ready Dishwasher (DWHD650WPR) and Pro Hood Insert (VCIN48GWS). **Ice Maker:** Marvel. **Cabinetry Hardware:** Emtek- Westwood Pulls, Cabinet Latches and Egg Cabinet Knobs in Polished Nickel. **Countertops:** First Coast Supply- Scorpious White Quartzite, Flat Polish. **White Vases:** Bungalow Classic. **Salad Servers:** Birch Lane- Issac Stainless Steel 2 Piece Salad Servers.

PANTRY

Windows: Marvin®- Integrity Traditional Double Hung. **Paint:** Sherwin-Williams- Ceiling, Cabinets and Countertop in SW 7005 Pure White. **Wallpaper:** Sherwin-Williams- ME1562 Magnolia Home. **Floor Tile:** Dimensions in Tile and Stone-Montauk Slate. **Ceiling Light:** Circa Lighting- Edwardian Open Bottom Flush Mount (CHC 4132BZ-WG). **Dinnerware, Glassware and Napkins:** Southern Living Exclusively at Dillard's- Hyacinth Placemats, Nito Round Chargers, White Simplicity Dinnerware, Blue Astra Dinnerware, Hemstitch Napkins and Acrylic Valencia Textured Glasses. **Woven Serving Pieces:** Amanda Lindroth. **Glasses:** Birch Lane- Perigold Crystal Drinking Glasses. **Baskets and Trays:** Birch Lane- Raffia Tapered Rattan Basket, Rattan Square Tray Baskets and Dorris Bamboo Coffee Table Tray. **Topiaries:** Cape House. **Additional Accessories:** Heather Chadduck Interiors.

INDOOR DINING

Windows and Doors: Marvin®- Clad Ultimate Outswing French Door with Glaze Transom and Clad Ultimate Double Hung- Next Generation 2.0. **Paint:** Sherwin-Williams- Walls and Trim in SW 7626 Zurich White, Ceiling in SW 6232 Misty and Windows (moving parts) in SW 7542 Natural. Floors are painted with all three colors. **Hand Painted Floors:** Finishing Touches by Jan. **Shades:** Joss Graham- Sidha Chik Blinds. **Lantern:** Heather Chadduck Interiors- Antique. **Sconces:** Circa Lighting- Hampton Wall Light (ARN 2001PW). **Dining Table:** Englishman's Fine Furnishings- 72" Round Dining Table with Cross Banding on a 4 Splay "C" Scroll Pedestal. **Dining Chairs:** LEE Industries- 5583-01 Chairs with Blanca Finish and Heather Chadduck Textiles, Petite Frond in China Blue. **Custom Chair Skirts:** Edwards Upholstery.

REAR PORCH

Windows and Doors: Marvin®- Clad Ultimate Outswing French Door with Glaze Transom and Clad Ultimate Double Hung- Next Generation 2.0. **Decking:** Zuri® Premium Decking- Weathered Gray. **Railings and Columns:** Royal Building Products- Custom Fabrication. **Lanterns:** Carolina Lanterns & Lighting- Charleston Hanging Yoke Mount and Single House Wall Mounts. **Ceiling Fans:** First Coast Lighting & Fans. **Concrete Pot Planters:** Birch Lane. **Sofas and Chairs:** Birch Lane- Provence Sofas and Club Chairs. **Coffee Table:** Birch Lane- Roscoe Coffee Table with Lift Top. **End Tables:** Birch Lane- Durwood End Tables and Mousoulita End Tables in Antique Gray. **Rug:** Annie Selke/Dash & Albert- Catamaran Stripe, Platinum/Ivory, Indoor/Outdoor. **Blue and White Pot:** Avala International, Inc. **Awning:** SunSetter Products- Platinum Awning with Navy/Taupe Fancy Sunbrella Fabric.

DINING PORCH

Decking: Zuri® Premium Decking- Weathered Gray. **Railings and Columns:** Royal Building Products- Custom Fabrication. **Lantern:** Carolina Lanterns & Lighting- Biloxi Pendant. **Dining Table:** Birch Lane- Lakeshore Teak Dining Table in Gray Ash. **Dining Chairs:** Birch Lane-Oriana Patio Dining Chairs in Brown. **Plant Arrangement:** Shoppe.

SCREEN PORCH

Doors: Marvin®- Clad Ultimate Outswing French Door with Clad Ultimate Casement Picture Transom and Clad Ultimate Outswing French Door with Clad Ultimate Awning- Stationary Transom. **Decking:** Zuri® Premium Decking- Weathered Gray. **Railings and Columns:** Royal Building Products- Custom Fabrication. **Ceiling Fan:** First Coast Lighting & Fans. **Lanterns:** Carolina Lanterns & Lighting- Custom Crane Island Lanterns. **Rug:** Birch Lane- Carena Weave Handwoven Brown Area Rug. **Sofa and Chairs:** Salt Cottage Home- Parrot Cay Club Sofa and Chairs in Walnut. **Sofa and Chairs Fabric:** Thibaut- Bailey/Cream with Trim in Bailey/Green. **Upholstered Cushions:** Edwards Upholstery. **Accent Pillow Fabric:** Ainsworth-Noah/Jasper by Michael Smith and Holly Hunt. **Ottoman:** LEE Industries- US127-10 Bermuda Outdoor Slipcovered Ottoman. **Bar:** Salt Cottage Home- Bungalow Bar in Walnut. **Mirror:** Century Furniture- Milan Bronze Finish Brass Mirror (84B-231). **Stools:** Birch Lane- Wadlington Metal Stools. **Wall Art:** Heather Chadduck Interiors- Antique "Tree of Life" Iron Artwork. **Additional Accessories:** Heather Chadduck Interiors.

MUDROOM

Window: Marvin®- Integrity Traditional Double Hung. **Paint:** Sherwin-Williams- Wall and Trim in SW 0050 Classic Light Buff. Ceiling in SW 7005 Pure White, Bench in SW 7541 Grecian Ivory and Window (moving parts) in SW 6202 Cast Iron. Floor paint in SW 7541 Grecian Ivory and SW 0050 Classic Light Buff. **Hand Painted Floors:** Finishing Touches by Jan. **Pendant:** Circa Lighting- Precision Small Pendant (KW 5221PN-WG). **Bench Cushion:** Design Industry by Grant Trick- French Mattress Cushion. Fabric- Marika Meyer Textiles, Laurel Leaf 03. **Hardware:** Emtek- Traditional Robe Hooks and Providence Knobs in Flat Black. **Artwork:** Theron Humphrey- 9 Original Photos "Maddie on Things". **Wall Mount Pot Filler:** Brizo- Artesso.

LAUNDRY VESTIBULE

Paint: Sherwin-Williams- Walls and Trim in SW 0050 Classic Light Buff, Ceiling in SW 7005 Pure White and Hutch in SW 7541 Grecian Ivory. Floor paint in SW 7541 Grecian Ivory and SW 0050 Classic Light Buff. **Hand Painted Floors:** Finishing Touches by Jan. **Ceiling Light:** Circa Lighting- Siena Large Flush Mount (SS4016BZ-WG). **Mirror:** Birch Lane- Convex Round Brown Wall Mirror. **Cabinetry Hardware:** Emtek-Cabinet Latch, Providence Knobs and Window Utility Pulls in Unlacquered Brass Finish. **Laundry Baskets:** Steele Canvas Basket Corporation- Canvas Elevated Truck with Brown Leather Rim and One Permanent Canvas Divider.

LAUNDRY

Window: Marvin®- Integrity Traditional Double Hung. **Paint:** Sherwin-Williams- Trim and Cabinets in SW 7541 Grecian Ivory, Ceiling in SW 7005 Pure White and Window (moving parts) in SW 6202 Cast Iron. **Wallpaper:** Sister Parish- Desmond Espresso (SPW-1600-10). **Lantern:** Clarkson Lighting- Huntsville 3-Light Lantern (5136103-782). **Sconces:** Circa Lighting-Longacre Sconce (TOPB 2010PN-NP). **Floor Tile:** Dimensions in Tile and Stone- Montauk Slate. **Countertop & Sink:** First Coast Supply- Slate. **Faucet:** Brizo- Artesso Bridge Faucet. **Roman Shade Fabric:** Sister Parish- Desmond Espresso (SPLL-1600-10). Classic Cloth- Trim in 1245/05 Eleanor in Licorice. **Cabinetry Hardware:** Emtek- Orbit Pulls and Egg Cabinet Knobs in Polished Nickel. **Laundry Baskets:** Steele Canvas Basket Corporation- Canvas Small Carry Basket and Canvas Round Carry Truck with Brown Leather Trim. **Towels:** Southern Living Exclusively at Dillard's- White Zero Twist Towels.

BACK HALL

Windows: Marvin®- Wood Ultimate Casement- Stationary. **Paint:** Sherwin-Williams- Walls, Trim and Ceiling in SW 7005 Pure White. **Runner:** Fibreworks- Kara Sisal. **Runner Fabricator/Installer:** Mercury Carpet & Flooring. **Ceiling Lights:** Circa Lighting- Fresno Small Framed Flush Mount (CHC 4033CH-CG).

SECOND FLOOR

GUEST BEDROOM

Windows: Marvin®- Clad Ultimate French Casement. **Paint:** Sherwin-Williams- Walls in SW 9136 Lullaby and Trim in SW 7757 High Reflective White. **Ceiling Wallpaper:** Meg Braff Designs, LLC- Southwind, White on Powder. **Rug:** Fibreworks- Kara Sisal. **Runner Fabricator/Installer:** Mercury Carpet & Flooring. **Window Shades:** Horizons Window Fashions- Classic Waterfall Shades in Aria Birch. **Chandelier:** Heather Chadduck Interiors- Antique. **Bed:** Birch Lane- Montgomery Canopy Bed, Painted in Sherwin-Williams- SW 7005 Pure White. **Slipcover and Bolster Fabric:** Les Indiennes- La Reine in French Grey. **Bedspreads and Fringed Dust Skirt:** Serena & Lily. **Pillow Shams, Sheets & Inserts:** Southern Living Exclusively at Dillard's. **Bedside Tables:** Universal Furniture- Escape, Coastal Living Collection Side Tables. **Bedside Table Lamps:** Circa Lighting- Sawyer Table Lamps (AH 3082TS-NP). **Art:** David Hillegas Photography- "Lifeguard Stand" Goa, India. **Mirror:** Birch Lane- Round Convex Accent Mirror. **Sofa:** LEE Industries- 3853-11 Apartment Sofa in Crete Robins Egg with Blanca Finish and Antique Brass Casters. **Cocktail Table:** Fabulous Things, LTD.- Caroline Square Cocktail Table, Faux Bois Custom Hand Painted Finish. **Lamp on Cocktail Table:** Circa Lighting- Lambay Table Lamp (CHA 8661ICO-NP). **Wicker Hurricane:** Amanda Lindroth. **Wicker Stools:** Birch Lane- Mousolita End Tables. **Art in Bath Entry:** Heather Chadduck Interiors. **Luggage Rack:** Birch Lane- Arreola. **Additional Accessories:** Heather Chadduck Interiors.

GUEST BATH

Windows: Marvin®- Integrity Traditional Double Hung. **Paint:** Sherwin-Williams- Trim, Ceiling and Vanity in SW 7005 Pure White. **Wall Tile:** Dimensions in Tile and Stone- 3x12 MAIO Cracked Aqua from Roca. **Floor Tile:** Dimensions in Tile and Stone- TMMS Prima Tile, White Penny. **Ceiling Light:** Circa Lighting- Crown Medium Flush Mount (CHC 4202PN). **Sconce:** Circa Lighting- Covington Shield Sconce (CHD 2473PN-CG). **Roman Shade Fabric:** Quadrille- Volpi Soft Windsor Blue. **Antique Mirror:** Heather Chadduck Interiors. **Sink:** Kohler- Caxton Oval in White. **Sink Faucet:** Brizo- Tresa Widespread Lavatory in Polished Nickel. **Shower Head, Shower Arm and Faucet:** Brizo. **Countertop:** First Coast Supply- Scorpious White Quartzite in Flat Polish. **Vanity and Bath Hardware:** Emtek- Porcelain Cabinet Knobs. **Waste Basket:** Birch Lane- Samira Waste Basket. **Towels:** Southern Living Exclusively at Dillard's- White Zero Twist Towels. **Soap:** Cape House.

STAIR HALL

Windows: Marvin®- Clad Ultimate Casement Picture and Clad Ultimate Casement- Stationary. **Paint:** Sherwin-Williams- Trim in SW 7566 Westhighland White and Ceiling in SW 7005 Pure White. **Wallpaper:** Thibaut- Narragansett in Beige T88770. **Runner:** Fibreworks- Kara Sisal. **Runner Fabricator/Installer:** Mercury Carpet & Flooring. **Picture Light:** Circa Lighting- Cosmopolitan 30" Picture Light (TOB 2623HAB). **Art Wall:** Catherine Jones Studio- Shapes Ledgers from the late 19th Century. **Lantern (lower level):** Circa Lighting- Brinkley Small Lantern (RL 57100BT-CG). **Chandelier (upper level):** Circa Lighting- Darlana Large Two-Tiered Ring Chandelier (CHC 5179AI). **Antique Chair:** Heather Chadduck Interiors. **Art (upper landing):** Ornis Gallery- Swedish Botanicals.

UPPER HALLWAY

Windows: Marvin®- Clad Ultimate Double Hung- Next Generation 2.0, Wood Ultimate Casement Picture Transom and Integrity Traditional Double Hung. **Paint:** Sherwin-Williams- Walls, Trim and Beams in SW 7566 Westhighland White, Ceiling in SW 9136 Lullaby and Porch Entry Door in SW 9140 Blustery Sky. **Porch Entry Door:** Vintage Doors. **Lanterns:** Circa Lighting- Brantley Lantern (SK 5007VG). **Picture Lights:** Circa Lighting- 18" Cabinet Maker's Picture Light (SL2705HAB). **Roman Shade Fabric:** Cowtan & Tout- Rutland in Indigo. **Roman Shade Trim:** Cowtan & Tout- Colefax and Fowler Delano Herringbone Braid. **Runner:** Annie Selke/Dash & Albert- Senna Ivory Camel Woven Wool. **Consoles:** Mainly Baskets- MB7001 Scallop Console. **Artwork:** Design Legacy by Kelly O'Neal- Printed Birds on Canvas. **Additional Accessories:** Heather Chadduck Interiors. **Ceiling Light (in nook):** Circa Lighting- Club Large Hexagonal Flush Mount (CHC 4126AB). **Sconces (in nook):** Circa Lighting- Dawes Sconce (RL2190). **Entry Door Hardware:** Brandino Brass Co.- Custom Rim Lock.

UPPER FRONT PORCH

Windows: Marvin®- Clad Ultimate Double Hung- Next Generation 2.0. **Decking:** Zuri® Premium Decking- Weathered Gray. **Railings and Columns:** Royal Building Products- Custom Fabrication. **Lanterns:** Carolina Lanterns & Lighting- Charleston Hanging Yoke Mount and Single House Wall Mounts. **Porch Entry Door:** Vintage Doors- painted in Sherwin-Williams- SW 9140 Blustery Sky. **Rocking Chairs:** Birch Lane- Cheltenham Hickory Rocking Chairs. **Entry Door Hardware:** Brandino Brass Co.- Custom Rim Lock.

BUNK ROOM BATH

Windows: Marvin®- Integrity Traditional Double Hung. **Paint:** Sherwin-Williams- Walls, Trim and Ceiling in SW 7005 Pure White. **Ceiling Light:** Clarkson Lighting- Academy One Light Semi- Flush Mount (77436-05). **Sconce:** Clarkson Lighting- Hooper 2- Light Vanity (VS23402CH). **Floor Tile:** Dimensions in Tile and Stone- Soho Studio Corp, Simple 1" Circles in Sky Blue, Gris and White. **Shower Wall Tile:** Dimensions in Tile and Stone- Dakota in White. **Sink:** Kohler- Brockway 3' Wall-Mounted Wash Sink in White. **Sink Skirt Fabric:** Heather Chadduck Textiles- Ginger in Bluebird GIN-06. **Faucet:** Chicago Faucets- Wall Mounted Faucets in Chrome. **Shower Fixtures:** Brizo- Showerhead, Arm & Flange and Faucet in Chrome. **Mirror:** Heather Chadduck Interiors. **Art:** Birch Lane- Egrets' 4 Piece Framed Graphic Art Print Set. **Hooks and Bath Hardware:** Emtek. **Waste Basket:** Birch Lane- Samira Waste Basket. **Soap:** Cape House.

BUNK ROOM

Windows: Marvin®- Wood Ultimate Casement Picture Transoms. **Paint:** Sherwin-Williams- Walls, Trim and Bunks in SW 7757 High Reflective White. **Wallpaper on Ceiling:** Schumacher- Santa Barbara Ikat/Neutral (5009222). **Chandelier:** Circa Lighting- Gramercy Mini Chandelier (CHC5370GI). **Sconces:** Circa Lighting- Graves Pivoting Sconce (SK2115HAB-NP). **Curtain Fabric:** Schumacher- Santa Barbara Ikat/Neutral (74222). **Curtain Trim:** Fringe Market- 3 Bell Tassel Fringe in Natural Cotton. **Curtain Hardware:** Gowan Iron. **Table:** The Plantation Shop- Vintage Bamboo Table. **Table Lamp:** Circa Lighting- Terri Round Table Lamp (TOB3023CG-NP). **Art:** Ornis Gallery- Anglo-Indian

Cats. **Coverlets and Pillow Shams:** Birch Lane- Glenville Coverlet Set in Ivory. **Tan/White Throws, Beaded Accent Pillows and all Inserts:** Southern Living Exclusively at Dillard's. **Bolster Pillows:** Heather Chadduck Textiles- Petite Frond in Camel PF01. **Accent Seagrass Pillows:** Pottery Barn. **Ceiling Lights (in bunk hallway):** Clarkson Lighting- Cadence 2- Light Indoor Flush Mount (FM390DAB). **Barn Door Hardware:** Emtek.

GAME ROOM

Windows and Doors: Marvin®- Integrity Outswing French Door, Integrity Traditional Double Hung, all with Integrity Traditional Double Hung Transoms. Wood Ultimate Casement Picture in Entry Opening. **Paint:** Sherwin-Williams- Trim and Doors in SW 7757 High Reflective White and Ceiling in SW 7005 Pure White. **Wallpaper:** Fabricut- 50163W Cambric/ Oxford 03. **Ceiling Fan:** First Coast Lighting & Fans. **Pendants:** Clarkson Lighting- Brynne 1-Light Medium Pendants (P1442FWH-LED). **Sconces:** Circa Lighting- Anette Single Sconce (RL 2250PN). **Drapery Fabric:** Fabricut/Vervain- Island Palms, Copen 9014. **Drapery Hardware:** Gowan Iron. **Banquettes:** LEE Industries- 7793-27LF and 7793-27RF in Alaska Mist. **Accent Pillow Fabric:** Fabricut/Vervain- Island Palms, Copen 9014 and Fabricut/Stroheim- Rivoli, Sage. **Game Tables:** Oomph- Chess and Backgammon Tables in Dove White with Navy and White Boards. **Game Table Chairs:** Universal Furniture- Escape, Coastal Living Collection Sanibel Arm Chairs. **Rattan Ottomans:** Universal Furniture- Escape, Coastal Living Collection Rattan Scatter Tables. **Etageres:** Universal Furniture- Escape, Coastal Living Collection Long Key Etageres. **Upholstered Chairs:** LEE Industries- 1430-01 Chairs in Jack Spearmint with Crescent White Buttons. **Art:** Ornis Gallery- Swedish Botanicals. **Vases:** The Plantation Shop.

SWINGING PORCH

Windows and Doors: Marvin®- Integrity Outswing French Door, Integrity Traditional Double Hung, all with Integrity Traditional Double Hung Transoms. **Decking:** Zuri® Premium Decking- Weathered Gray and Chestnut. **Railings and Columns:** Royal Building Products- Custom Fabrication. **Lanterns:** Carolina Lanterns & Lighting- Charleston Hanging Yoke Mount and Single House Wall Mounts. **Bedswings:** Original Charleston Bedswing- Painted in Sherwin-Williams- SW 7008 Alabaster. **Accent Pillows:** Southern Living Exclusively at Dillard's- Blue Pillows and Design Legacy by Kelly O'Neal. **Table:** Elegant Earth- 60" Perfect Round Dining Table. **Planters:** Birch Lane- South Seas Cast Stone and Anaya Cast Stone Pot Planters.

QUEEN BEDROOM

Windows: Marvin®- Integrity Traditional Double Hung. **Paint:** Sherwin-Williams- Walls and Crown in SW 7008 Alabaster, Window Trim in SW 9133 Jasper Stone and Ceiling in SW 6204 Sea Salt. **Window Shades:** Horizons Window Fashions- Classic Waterfall Shades in Rainforest Natural. **Pendant:** Clarkson Lighting- Westminster 3-Light Pendant (65047-715). **Picture Light:** Circa Lighting- Anette 9" Picture Light (RL 2275PN). **Swing Arm Lamps:** Circa Lighting- Paulo Small Bracket Light (TOB2203PN-NP). **Bed:** Heather Chadduck Interiors- Antique. **Bed Canopy Fabrication:** Design Industry by Grant Trick. **Bed Canopy Fabric:** Heather Chadduck Textiles- Lillie Berrie in Aloe LiI04W (outside fabric) and Ainsworth- Noah/Jasper by Michael Smith- Dutch Stripe in Porcelain. **Bed Canopy Trim:** Fabricut- Sash Spa. **Coverlet and Inserts:** Southern Living Exclusively at Dillard's. **Duvet, Sheets and Shams:** Leontine Linens- Euro Cases with Malcolm Embroidery Monogram and Sheet with Bamboo Embroidery Border. **Bolster Fabric:** Sister Parish- Burmese in Sea Foam. **Vintage Accent Pillow:** Heather Chadduck Interiors. **Bedside Tables:** Bebe & Lenox- 18th Century Bedside Tables in Mahogany Stain. **Bedside Table Lamps:** Circa Lighting- Yue Double Gourd Table Lamp (CHA 8663ICB-NP). **Bench:** Bebe & Lenox- Caned Bench in Mahogany. **Secretary:** Century Furniture- Thomas O'Brien, Hallings Secretary (AEA-765). **Desk Lamp:** Circa Lighting- Wyatt Accent Lamp (SK 3005AN-NP). **Chairs:** LEE Industries-5583-01 Chairs in Barrett Ocean. **Rug:** Fibreworks- Bakari, 470 Canvas. **Art:** David Hillegas Photography- "House of Blues" St. Lucia and "Mall Call" St. Barths. Birch Lane- Aqua Coral Art. **Luggage Rack:** Birch Lane- Arreola Luggage Rack in White. **Additional Accessories:** Heather Chadduck Interiors.

QUEEN BATH

Windows: Marvin®- Integrity Traditional Double Hung. **Paint:** Sherwin-Williams- Trim in SW 7008 Alabaster, Ceiling in SW 7005 Pure White and Vanity in SW 9133 Jasper Stone. **Wallpaper:** Soane Britain- Dianthus Chintz in Lapia. **Sconces:** Circa Lighting- Pimlico Single Light (CHD 2153PN-WG). **Ceiling Light:** Circa Lighting- Marine Porthole Large Flush Mount (RL 19024PN). **Roman Shade:** Joss Graham- Chik Blind in Gilas Design. **Roman Shade Fabric:** Soane Britain-Dianthus Chintz in Lapis/Ivory Linen. **Mirrors:** Heather Chadduck Interiors and JW Frame Gallery. **Countertops:** First Coast Supply- Carrera Marble. **Sinks:** Kohler- Verticyl Rectangular Undermount in White. **Faucets:** Brizo- Tresa Two Handle Wall Mount in Polished Nickel. **Baskets:** Birch Lane- Mowery Shelf & Under Bed Rattan Basket. **Bath Tub:** Kohler-Bellwether 5' Bath in White. **Tub/Shower Faucet:** Brizo- Rook in Polished Nickel. **Vanity and Bath Hardware:** Emtek- Providence Knobs. **Shower Wall Tile:** Dimensions in Tile and Stone- Roc Maio 28830718, Cracked White 3x12. **Shower Curtain Fabric:** Fabricut- Madison Surf with Madison Marine Trim. **Towels:** Southern Living Exclusively at Dillard's- White Zero Twist Towels. **Soap and Chamomile Bubble Bath:** Cape House- Meri/Sea. **Blue & White Vase:** Avala International, Inc.

TWIN BEDROOM

Windows: Marvin®- Integrity Traditional Double Hung. **Paint:** Sherwin-Williams- Walls and Crown in SW 7008 Alabaster, Trim and Windows in SW 6148 Wool Skein and Ceiling in SW 6336 Nearly Peach. **Pendant:** Clarkson Lighting- Westminster 3-Light Pendant (65047-715). **Drapery Fabric:** King Cotton- Dudley in Coffee 437-353. **Drapery Trim:** Samuel and Sons- Harbour Beaded Braid, 02 Sand Dune. **Window Shades:** Horizons Window Fashions- Classic Waterfall Shades in Seclude Natural. **Drapery Hardware:** Antique Drapery Rod- Bamboo Rods in Tortoise Shell and Ball Finial, Grace Bracket and Iron Rings in French Oak. **Rug:** Fibreworks- Ribbon Collection, Crystalline. **Beds:** Reid Classics- Custom Solid Mahogany Twin Beds in Walnut Color. Upholstery Work on Beds by Sharon Nichols with Bespoke Drapery in Dothan, Al. **Fabric on Beds:** Heather Chadduck Textiles- Ginger Blush. **Coverlet:** Serena & Lily- Natural Linen Coverlet. **Duvet & Pillow Shams:** Leontine Linens- White Percale with Coffee Linen Trim and Chantel Embroidery Monogram. **Bolster Fabric:** King Cotton- Dudley in Coffee 437-353. **Lumbar Pillow Fabric:** Heather Chadduck Textiles-Ginger in Rose. **Throw Blankets:** Southern Living Exclusively at Dillard's. **Bedside Table, 18th Century Walnut Hutch, Chippendale Cocktail Table and Two Accent Chairs:** Heather Chadduck Interiors. **Upholstered Chairs:** LEE Industries- 1931-01 Chairs in Nora Sands. **Bedside Lamp:** Circa Lighting- Wyatt Accent Lamp (3005HAB-NP). **Floor Lamps:** Circa Lighting- Studio Adjustable Floor Lamps (91025 HAB). **Accent Lamp in Hutch:** Circa Lighting- Terri 15" Alabaster Natural Stone Table Lamp (TOB3023ALB-NP). **Art on Hutch:** David Hillegas Photography- "Crane Island No. 3". **Art-set of 6:** Chloe Wood Art- "Golden Hour" Series. **Luggage Rack:** Birch Lane- Arreola. **Additional Accessories:** Heather Chadduck Interiors.

TWIN BATH

Windows: Marvin®- Integrity Traditional Double Hung. **Paint:** Sherwin-Williams- Trim (sink area) and Vanity in SW 6148 Wool Skein, Trim (shower area) in SW 7008 Alabaster and Ceilings in SW 7005 Pure White. **Wallpaper and Vanity Skirt Fabric:** Ainsworth- Noah/Clay McLaurin Studio- Santiago in Sand. **Sconces:** Circa Lighting- Marlborough Single Sconce (CHD 1125GI). **Ceiling Light:** Circa Lighting- Siena Large Flush Mount (SS 4016HAB-WG). **Sink:** Kohler- Caxton Oval in White. **Faucet:** Brizo- Tresa in Polished Nickel. **Countertops:** First Coast Supply- Cambria. **Mirror:** Made Goods- Grotta Mirror. **Vanity Hardware:** Emtek- Providence Crystal Knobs. **Vanity Chair:** LEE Industries- 7551-01 Chair in Farrow Old Rose with Weathered Grey Finish. **Soap:** Cape House. **Additional Accessories:** Heather Chadduck Interiors. **Wall Tile:** Dimensions in Tile and Stone- Dakota, Peninsula Gloss. **Floor Tile:** Fixtures & Finishes- Maison Surface Geometro, Nice/Country. **Stools in Shower:** Avala International, Inc. **Towels:** Southern Living Exclusively at Dillard's- White Zero Twist Towels.

SPECIAL THANKS TO OUR NATIONAL SPONSORS



1 BIRCH LANE

Classic furniture and decor—at a comfortable cost. Let's make your home the heart of family gatherings. birchlane.com

2 CAROLINA LANTERNS & LIGHTING

Located in Charleston, South Carolina, Carolina Lanterns' classic, understated designs reflect gas and electric lanterns that have historically graced the finest homes, inns, and streets of the South. There is simply no better way to add old-world warmth, charm, and value to a home or commercial establishment than with a Carolina Lantern. carolinalanterns.com

3 CIRCA LIGHTING AND CLARKSON LIGHTING

Circa Lighting, the premiere resource for Visual Comfort, Tech and Monte Carlo Fans. Clarkson Lighting, the premier source for Generation Lighting. Through both brands we offer a whole home solution for every style and budget. circalighting.com clarksonlighting.com

4 CLOPAY®

Stylish wood-look garage doors in a low-maintenance composite that won't rot, warp, or crack. Fifteen designs can be painted or stained. clopaydoor.com

5 SOUTHERN LIVING EXCLUSIVELY AT DILLARD'S

Shop the complete Southern Living collection for bedding, bath, home décor, and more. Available in-store and online. dillards.com/southernliving

6 JAMES HARDIE® BUILDING PRODUCTS

The Aspyre Collection by James Hardie™ expands design possibilities and provides uncompromising performance for distinctive design, engineered to last. aspyredesign.com

7 MARVIN®

Marvin is driven by our purpose to imagine and create better ways of living. Marvin's product portfolio includes the Signature, Elevate and Essential Collections—an extensive selection of made-to-order windows and doors. Our products deliver quality you can see, touch, and feel, beauty that brings joy, and performance that stands the test of time. Explore at marvin.com

8 THE SHERWIN-WILLIAMS COMPANY

Sherwin-Williams Emerald® premium paint and primer in one allows you to achieve stunning results in fewer coats. sherwin-williams.com

9 SOUTHERN LIVING PLANT COLLECTION

Want your gardens to look like the pages of Southern Living? Selected specifically for our Southern climate, these plants deliver. southernlivingplants.com

10 SUNSETTER PRODUCTS

SunSetter is America's largest manufacturer of deck and patio awnings. Our mission is to provide the highest quality retractable awnings at the most economical prices. sunsetter.com

11 ZURI® PREMIUM DECKING

Royal's Zuri® Premium Decking is a premium cellular PVC decking option combining the aesthetics of exotic timber with high durability and very low maintenance demands. royalbuildingproducts.com/zuri

CONTRIBUTING SPONSORS

Abbot & Atlas
abbotandatlas.com

AC Masters
acmastersjax.com

Ainsworth-Noah
ainsworth-noah.com

All Terrain Landscaping
904.571.0102

Amanda Lindroth
amandalindroth.com

Annie Selke
annieselke.com

Antique Drapery Rod
antiquedraperyrod.com

Architectural Overflow LLC
aolllc.net

Avala International, Inc.
avalainc.com

Apex Technology
apextechnology.com

Bebe & Lenox
bebeandlenox.com

Bosch/Thermador- BSH
thermador.com

Brandino Brass Co.
brandinobrass.com

Bungalow Classic
bungalowclassic.com

Bunny Williams Home
bunnywilliamshome.com

Cape House
shopcapehouse.com

Casa-Contracting
casa-contracting.com

Catherine Jones Studio
catherinejonesstudio.com

Century Furniture
centuryfurniture.com

Chandler's Trim, Inc.
904.626.1575

Chloe Wood Art
chloewoodart.com

City of Fernandina Beach
fbfl.us

Classic Cloth by Dessin Fournir
dessinfournir.com

Clay McLaurin Studio
claymclaurin.com

Colfax and Fowler
cowtan.com

Concrete Masters
concretemastersjax.com

Cowtan & Tout
cowtan.com

Crossville Studios
crossvillestudios.com

David Hillegas Photography
davidhillegas.com

Decora Cabinets
decoracabinets.com

Delta Faucets
suncoastsalesllc.com

Design Industry by Grant Trick
grantrick.com

Design Legacy by Kelly O'Neal
design-legacy.com

Dimensions in Tile and Stone
dimensionsintile.com

Ecco Doors Manufacturing, LLC
eccodoors.com

Edgar-Reeves Lighting
edgar-reeves.com

Edwards Upholstery
904.287.5985

Elegant Earth
elegantearth.com

Emtek
emtek.com

Englishman's Fine Furnishings
englishmansfurniture.com

Fabricut Inc.
fabricut.com

Fabulous Things, Ltd.
fabulousthingsatlanta.com

Fibreworks
fibreworks.com

Finishing Touches by Jan
Instagram: JanRobertsBaker

First Coast Finish Carpenters
first-coast-finish-carpenters-llc.
business.site

First Coast Lighting and Fans
firstcoastlighting.com

First Coast Supply
fcsjax.com

**Five Smooth Stones Audio
Video & More**
fivesmoothstonesav.com

Fixtures & Finishes
fixturesandfinishes.com

Fresh Coat Custom Painting
904.962.2017

Fringe Market
Fringemarket.com

Gowan Iron
gowaniron.com

Gracie Studio
graciestudio.com

Gulf Coast Supply & Manufacturing
gulfcoastsupply.com

**Heather Chadduck
Interiors & Textiles**
heatherchadducktextiles.com

Hickory Creek Builders
hickorycreekbuilders.com

Horizons Window Fashions
horizonshades.com

JAMES Showroom
jamesshowroom.com

Jasper by Michael Smith
michaelsmithinc.com

John Green Builds
johngreenbuilds.com

JW Frame Gallery
jwframegallery.com

Ken Ledford Wallpaper Installation
904.704.9504

Kings House Oriental Rugs
kingshouseorientalrugs.com

LEE Industries
leeindustries.com

Leontine Linens
leontinelinens.com

Made Goods
madegoods.com

Mainly Baskets
mainlybaskets.com

MAPEI Corporation
mapei.com

Manning Building Supply
mbs-corp.com

Manzie & Drake Land Surveying
manzieanddrake.com

Marika Meyer Textiles
marikameyertextiles.com

Meg Braff Designs, LLC
megbraffdesigns.com

Mercury Carpet & Flooring
mercurycarpets.com

Miller Home Construction
904.449.8152

MosquitoNix
Mosquitonix.com

Nelson Plumbing, Inc.
nelsonplumbing.org

Oomph
oomphhome.com

Original Charleston Bedswing
originalcharlestonbedswing.com

Ornis Gallery
ornisgallery.com

Pillow Cubes
Pillowcubes.com

R & T Trim
904.759.6494

Real Sleep by Real Simple
realsleep.com

Reid Classics
reidclassics.com

Revelation Design
revelation.design

Salt Cottage Home
saltcottagehome.com

Schumacher
fschumacher.com

Serena & Lily
serenaandlily.com

Shoppe
shoppebham.com

Sims Aluminum Construction, Inc.
simsexteriorsolutions.com

Sister Parish
sisterparishdesign.com

Soane Britain
soane.com

Steele Canvas Basket Corporation
steelecanvas.com

Suddath
suddath.com

The Artistree
thefauxcollective.com

The Plantation Shop
theplantationshop.com

The Window Dressers
thewindowdressers.net

Thibaut
thibautdesign.com

Top Gun Roofing, Inc.
topgunroofing.net

Top Line Drywall, LLC
toplinedrywall.com

Travis and Company
travisandcompany.com

Tri County Electrical Contractors
904.759.0217

True House, Inc.
904.237.1923

Turners Specialty & Hardware Inc.
turnerscustomshowers.com

Universal Furniture
universalfurniture.com

Vintage Doors
vintagedoors.com

WFP, Inc.
wfpcedar.com

Wilson Carpentry, LLC
904.334.5821