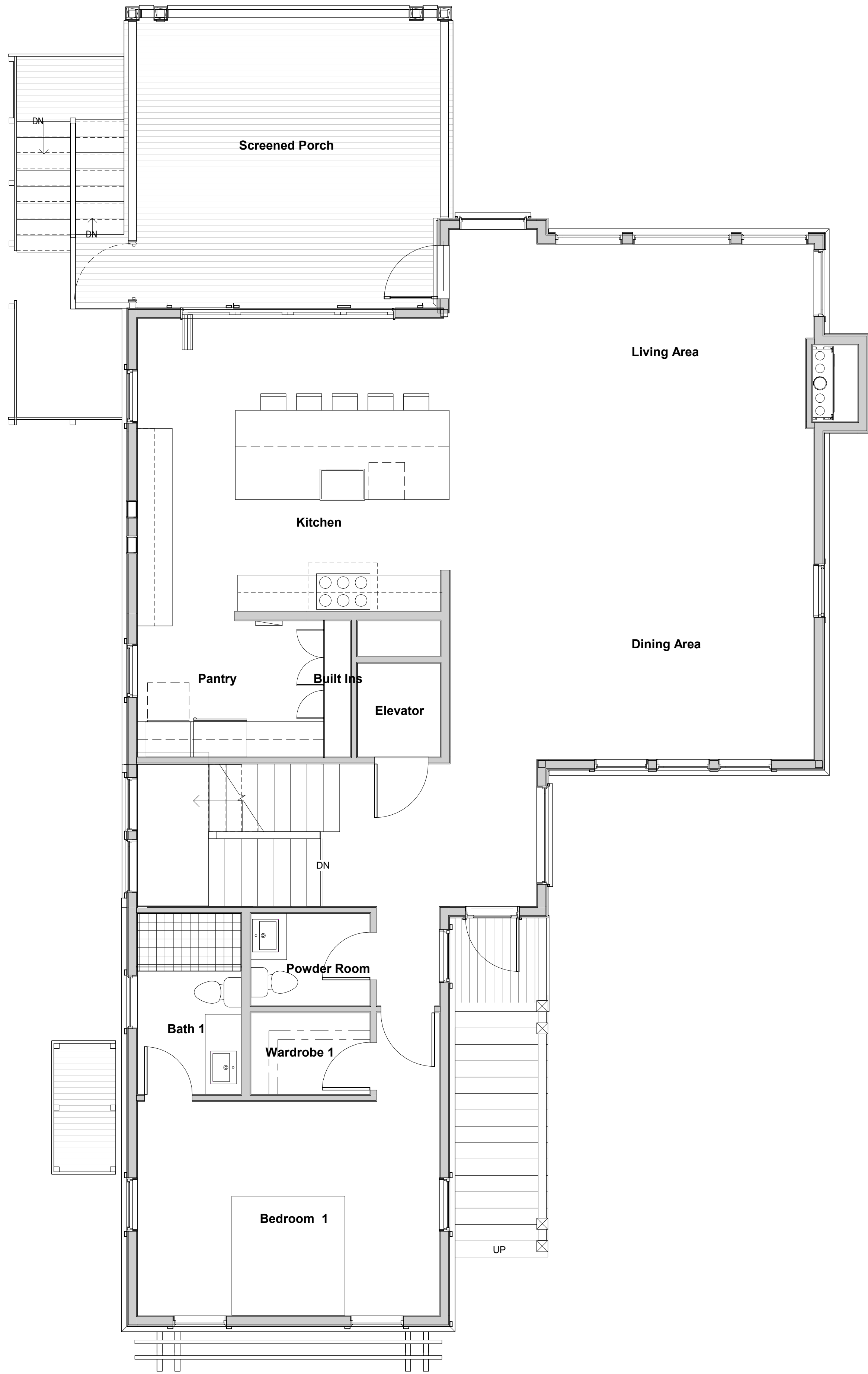


① Ground Floor Level  
1/4" = 1'-0"



② First Level Plan  
1/4" = 1'-0"

Revision Schedule		
No.	Description	Date

Project Title

Marsh Point Cottages  
Marsh Point at Crane Island  
Amelia Island, Florida

Drawing Title

Floor Plans

Date

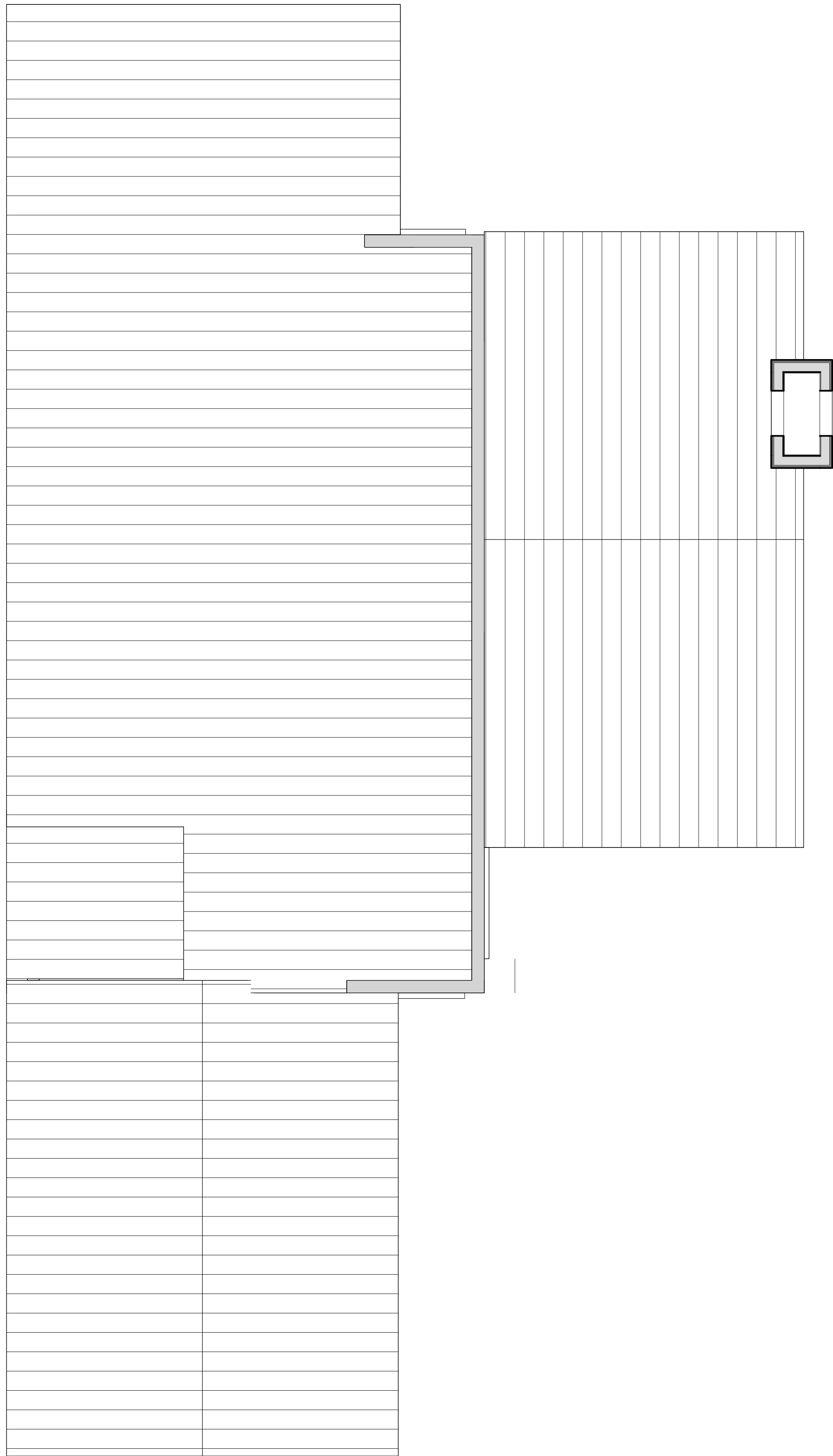
JUNE 2022

Scale

1/4" = 1'-0"

Drawing No.

A-1



① Second Level Plan  
1/4" = 1'-0"

② Roof & Parapet Level  
1/4" = 1'-0"

Revision Schedule		
No.	Description	Date

Project Title

Marsh Point Cottages  
Marsh Point at Crane Island  
Amelia Island, Florida

Drawing Title

Floor Plan & Roof Plan

Date

JUNE 2022

Scale

1/4" = 1'-0"

Drawing No.





① Street Facing Elevation  
1/4" = 1'-0"



② Right Side Elevation to Street  
1/4" = 1'-0"

# THOMAS & DENZINGER ARCHITECTS

73 1/2 State Street, Charleston, South Carolina 29402  
P.O. Box 1503 Telephone 843 577 5373  
920 Bay Street, Beaufort, South Carolina 29902  
Telephone 843 524 6361  
138 St Philip Street, Suite 200, South Carolina 29413  
P.O. Box 20157 Telephone 843 723 6651

Revision Schedule		
No	Description	Date
.		

Project Title

Marsh Point Cottages  
Marsh Point at Crane Island  
Amelia Island, Florida

Drawing Title

Exterior Elevations

Date  
JUNE 2022

Scale  
1/4" = 1'-0"

Drawing No.

A-3





① Marsh Facing Elevation  
1/4" = 1'-0"



② Left Side Elevation to Street  
1/4" = 1'-0"

Revision Schedule

No	Description	Date
.		

Project Title

Marsh Point Cottages  
Marsh Point at Crane Island  
Amelia Island, Florida

Drawing Title

Exterior Elevations

Date  
JUNE 2022

Scale  
1/4" = 1'-0"

Drawing  
No.

A-4





① view from marsh



② view from street facing west



④ view from street 1



③ view from marsh 1

Revision Schedule		
No	Description	Date

Project Title

Marsh Point Cottages  
Marsh Point at Crane Island  
Amelia Island, Florida

Drawing Title

Miscellaneous Exterior Views

Date  
JUNE 2022

Scale

Drawing  
No.

A-5